

Friendly algoma

2024 Visitors' Guide



Algoma Area Chamber of Commerce

www.algoma.org • 920.487.2041 • info@algomachamber.org







Beyond Legendary



Your
discovery
awaits.

Pack in the memories that will be, well, legendary.
Start your adventure at greenbay.com.



visitorinfo@greenbay.com | 920.494.9507 or 888.867.3342    

greenbay.com

TASTE WHERE



IT'S CRAFTED



WINERY CIDERY DISTILLERY



Wisconsin's Oldest Winery now offers bourbon, brandy, and cider. Get the full experience and visit our Wine Tasting Room and Spirits & Cider Bar. Take the tour and enjoy award-winning offerings and fun year-round events!



115 NAVARINO ST. · ALGOMA, WI 54201
[920] 487-5208 · VONSTIEHL.COM

Welcome to Algoma, WI!

On behalf of the Algoma Area Chamber of Commerce, area businesses and organizations, City Council, and residents it is our pleasure to welcome you to the city of Algoma, WI.

Also known as "Friendly Algoma" we live up to that reputation through our services, warm greetings, and friendly smiles!

Many happy memories await during your visit to Algoma!



- Explore the arts community including 17 murals (and counting!)
- Walk along the Crescent Beach Boardwalk
- Hike, bike, or snowmobile the Ahnapee State Trail or the Ice Age Trail
- Sample the local wine and beer
- Enjoy a bite to eat
- Shop our historic downtown
- Plan a fishing trip in hopes of catching 'the big one'!
- Soak up the Lake Michigan view on our sandy Crescent Beach
- Kayak or canoe the Ahnapee River
- Enjoy an outdoor concert
- And much, much more!

Our Visitor Center staff, businesses, and organizations are eager to answer your questions and help you make the most of your Friendly Algoma experience.

We look forward to seeing you soon!

Jennifer Highland

President

Rosemary Paladini

Executive Director

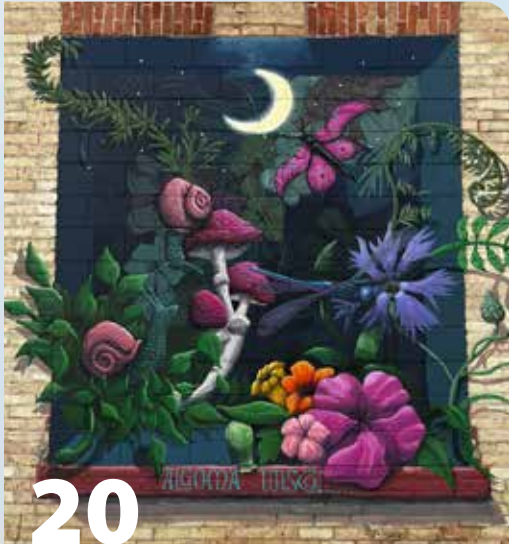




7



16



20



22



26



47

Table of Contents

Algoma Area Events	7
Experience Algoma	16
Algoma History & Art	20
Area Attractions	22
Fishing & Outdoor Recreation	26
Area Maps & Location Guide	29
Accommodations	35
Dining	40
Shopping	43
Business & Relocation	47
Membership Directory	52

We were moved by the warm welcome and the beauty of the city. We hope to return and spend more time in Algoma to truly explore your city. Thank you for the hospitality you showed our fellow passengers.

-Mike & Anne H., California
Viking Cruise Passengers, July 2023



The award-winning Algoma Visitor Center is located on Hwy 42 overlooking Lake Michigan. There is wheelchair-accessible entry to the Crescent Beach Boardwalk along with accessible public restrooms that are open daily from sunrise to sundown. Benches and picnic areas are also available so you can enjoy the sights and sounds during your visit.

The Center is staffed year-round by a group of volunteers from around the community who provide information to visitors on attractions, accommodations, dining, fishing, things to see and do, and how to get there.

1226 Lake Street • Algoma, WI 54201 • 920-487-2041 • info@algomachamber.org



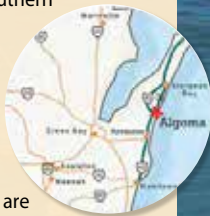
About Algoma

Situated on the shore of Lake Michigan and the Ahnapee River in Northeast Wisconsin, Algoma is the perfect combination of hometown charm, natural beauty, and quality schools and services that attract a wide variety of new residents from young families to retirees.

It's some of what we don't have that impresses people: no stoplights, no traffic problems, no long lines at restaurants or stores..

We enjoy a high quality of life: Lake Michigan on our doorstep, a highly skilled and motivated workforce, dedicated educators, an award-winning youth club, a low cost of living, a low crime rate, many service clubs, a community wellness center, a full-service library, a vibrant art scene, a world-class charter fishing industry, many outdoor recreation options, and much more.

Algoma is located at the southern end of the Door Peninsula, just 5 miles south of Door County. The city of Green Bay is 30 minutes east where I-43 provides quick access to Milwaukee (90 minutes) and Chicago (3.5 hours). Hwy 42 and Hwy 54 are the main access roads into Algoma.



The Algoma Pierhead Lighthouse: *A Brief History*



Originally known as Wolf River, Algoma was settled by English and Irish pioneers in 1851. The village eventually became known as Ahnapee (An-Ne-Pe), meaning "land of the great gray wolf" by the Potawatomi Tribe. In the late 1800s, Ahnapee was officially renamed Algoma and although the origin of the meaning of Algoma is unclear, a few translations have been used throughout the years. "Where waters meet", "valley of flowers", "Sea of the Algonquians", and "snowshoe" are all translations often used from the Algonquian, Potawatomi, and Ojibwe Tribes.

Due to the growth of the commercial fishing industry, there became a need for an Aid to Navigation (ATON) at the harbor entrance. In 1890, Congress approved a request for \$2,500 by the Lighthouse Board for the construction of a pierhead tower and post light on Algoma's northern pier.

In 1893, the first tower and oil-operated light was established on the north pier head. It was a square, pyramidal wooden tower painted white, surmounted by a black, hexagonal iron lantern with a red lens that illuminated the lake.

In 1907 the deteriorating wooden beacon was demolished and by 1908 it was replaced by a red, cast-iron cylindrical tower and stood twenty-six feet tall. Twice daily, the light was operated manually, and by 1910, the first fog signal was

established. In 1939 the United States Coast Guard officially took over operations of all U.S. lighthouses.

In 1932, a cylindrical steel base was brought in from Muskegon, MI, and installed on the pier to enhance the beacon's visibility. The 1908 tower was secured on the top of the cylinder increasing its focal plane to well over 40 feet. A new diaphone fog signal was added which was operated by remote control. Automation of the lighthouse took place in 1976.

In August 2014, the Algoma Pierhead Lighthouse received a fresh coat of red paint along with interior/ exterior concrete work, foundation replacement, glass window replacement and catwalk board replacement and painting.

In 2019, the historic fifth-order Fresnel lens was removed from the tower and replaced with an LED beacon. After being restored, the lens is on exhibit at Milwaukee's North Point Lighthouse.

On the Register of Historic Places, the Algoma Pierhead Lighthouse stands at the mouth of the Ahnapee River on Lake Michigan, ready to keep mariners safe and greet visitors to Friendly Algoma. The Algoma Pierhead Lighthouse is a popular subject for photographers and has come to be the symbol of the community. Learn more: algomachamber.org.

2024 Events



JANUARY

FIRST FRIDAY ART IN ALGOMA

January 5 | Historic Downtown Algoma

5-8PM New art exhibition opening receptions where you can often meet the artists. Sales, refreshments, great conversation, hands-on activities.

WINEMAKERS EXPERIENCE

January 20 | von Stiehl Winery

1-6:30PM 115 Navarino St. Join von Stiehl's production team for an unforgettable winter day celebrating the many flavors of four unique barrels. Admission includes: a seated tasting, meeting barrel cooper, Joe, to learn about barrels while watching one being built! Follow a wine's progression from barrel aging to bottling in a blending class, enjoy a buffet dinner catered by Steel Belly BBQ and balanced by various von Stiehl wines. The grand finale: a barrel auction where all proceeds benefit the Algoma School's Wolf Den. Sign up online at vonstiehl.com.

FEBRUARY

FIRST FRIDAY ART IN ALGOMA

February 2 | Historic Downtown Algoma

5-8PM New art exhibition opening receptions where you can often meet the artists. Sales, refreshments, great conversation, hands-on activities.

VON STIEHL WINERY CUISINE CONCERTS

February 23 | von Stiehl Winery Production Facility

4-7PM 108 Steele St. Hale & Hall Acoustic Duo. von Stiehl's Cuisine Concert Series shines the spotlight on an array of talented musicians one Friday & Saturday a month for the 2024 winter season. Enjoy mouth-watering entrees from Steel Belly BBQ prepared to match the music. vonstiehl.com.

VON STIEHL WINERY CUISINE CONCERTS

February 24 | von Stiehl Winery Production Facility

1-4PM 108 Steele St. The Snowbirds, Pop-

Flavored Americana. von Stiehl's Cuisine Concert Series shines the spotlight on an array of talented musicians one Friday & Saturday a month for the 2024 winter season. Enjoy mouth-watering entrees from Steel Belly BBQ prepared to match the music. vonstiehl.com

ZOUPART

February 25 | Kewaunee County Fairgrounds

11AM-2PM 625 3rd St. Luxemburg The Zoological Society of Kewaunee County's annual ZoupArt fundraiser. Hot soup and a dazzling student art show. All proceeds go to Bruemmer Park Zoo in Kewaunee. bruemmerparkzoo.com

MARCH

ARTBEET'S YOUTH ART MONTH (YAM)

All Month | Kewaunee County

YAM celebrates the young creatives who make Kewaunee County sparkle. Visual and performing arts workshops, shows in local galleries, juried exhibits and an open mic night. artbeetkc.square.site

FIRST FRIDAY ART IN ALGOMA

March 1 | Historic Downtown Algoma

5-8PM New art exhibition opening receptions where you can often meet the artists. Sales, refreshments, great conversation, hands-on activities.

VON STIEHL WINERY CUISINE CONCERTS

March 15 | von Stiehl Winery Production Facility

4-7PM 108 Steele St. Russ Reiser, Guitarist from Vic Ferrari. von Stiehl's Cuisine Concert Series shines the spotlight on an array of talented musicians one Friday & Saturday a month for the 2024 winter season. Enjoy mouth-watering

entrees from Steel Belly BBQ prepared to match the music. vonstiehl.com

CAB CLASS

March 16 | von Stiehl Winery

11AM-1PM 115 Navarino St. Celebrate and be educated on six of von Stiehl's cabernets! Anthony, the winery's GM and Sommelier, will take you on a tasting tour of the different AVA's and styles of von Stiehl's cabs. You will learn how to pair red wine with foods while enjoying small bite pairings. \$40 per person in advance. Learn more and sign up online at vonstiehl.com.

VON STIEHL WINERY CUISINE CONCERTS

March 16 | von Stiehl Winery Production Facility

1-4PM 108 Steele St. D'Fusion – Pop & Contemporary Jazz. von Stiehl's Cuisine Concert Series shines the spotlight on an array of talented musicians one Friday & Saturday a month for the 2024 winter season. Enjoy mouth-watering entrees from Steel Belly BBQ prepared to match the music. vonstiehl.com

SPRING FEVER PACKAGE

March 20-23, 27-30 (Wed-Sat) | Hotel Stebbins

201 Steele St. Hotel Stebbins famous two-night stay special that includes dining, drinks, area fun, and more! Watch Facebook for updates and visit hotelstebbins.com for reservations.

ROAR OFF THE SHORE BREWFEST

March 23 | Kewaunee County Fairgrounds

2-6PM 625 3rd St. Luxemburg. Taste some of the best beer, wine, and food in Northeastern Wisconsin! All proceeds benefit projects of the Kewaunee Lions Club and Dyckesville Lions Club. roarofftheshore.com

Check out events happening in the Algoma, WI area from music, festivals, art, & more!

For up-to-date event details, head to VisitAlgomaWI.com/events/

APRIL

SPRING FEVER PACKAGE

April 3 - 6, 10 - 13, 17 - 20, 24 - 27 (Wed-Sat)

Hotel Stebbins | 201 Steele Street

Hotel Stebbins famous two-night stay special that includes dining, drinks, area fun, and more! Watch Facebook for updates and visit hotelstebbins.com for reservations.

FIRST FRIDAY ART IN ALGOMA

April 5 | Historic Downtown Algoma

5-8PM New art exhibition opening receptions where you can often meet the artists. Sales, refreshments, great conversation, hands-on activities.

BREAD & BOOYAH

April 21 | Belgian Heritage Center

11AM-1PM 1255 County Road DK Brussels
Enjoy booyah, bread, desserts and beverages.
belgianheritagecenter.org

VON STIEHL WINERY CUISINE CONCERTS

April 26 | von Stiehl Winery Production Facility

4-7PM 108 Steele St. Hunter Gatherer, Alt-mericana, Indie-Folk, Gothic Country. von Stiehl's Cuisine Concert Series shines the spotlight on an array of talented musicians one Friday & Saturday a month for the 2024 winter season. Enjoy mouth-watering entrees from Steel Belly BBQ prepared to match the music. vonstiehl.com

BIRD CITY ALGOMA WORLD MIGRATORY BIRD DAY CELEBRATION

April 27 | Algoma Youth Club

620 Lake St. Join Bird City Algoma for its annual World Migratory Bird Day celebration. birdcityalgoma.com

VON STIEHL WINERY CUISINE CONCERTS

April 27 | von Stiehl Winery Production Facility

1-4PM 108 Steele St. PM KLK Trio, Classic Rock. von Stiehl's Cuisine Concert Series shines the spotlight on an array of talented musicians one Friday & Saturday a month for the 2024 winter season. Enjoy mouth-watering entrees from Steel Belly BBQ prepared to match the music. vonstiehl.com

MAY

SPRING FEVER PACKAGE

May 1-4, 8-11 (Wed-Sat) | Hotel Stebbins

201 Steele St. Hotel Stebbins famous two-night stay special that includes dining, drinks, area fun, and more! Watch Facebook for updates and visit hotelstebbins.com for reservations.

FIRST FRIDAY ART IN ALGOMA

May 3 | Historic Downtown Algoma

5-8PM New art exhibition opening receptions where you can often meet the artists. Sales, refreshments, great conversation, hands-on activities.

AHNAPEE BREWERY SPRINGFEST

May 25 | Ahnapee Brewery Taproom

12-4PM 202 Clark St. Algoma Specialty pin tapping, food truck, live music and celebrate Spring!

WELCOME GREAT LAKES VIKING CRUISE SHIPS & GUESTS

May 29 | Algoma Harbor

Come and join Algoma, see the Viking cruise ships and greet the passengers as they disembark! Take in all the sights and sounds of the area while you are here! Keep up to date on Facebook @cruisingintoalgomawi and on the Chamber's website: bit.ly/2024cruiseshipdays

JUNE

LOST WAX BRONZE CASTING CLASSES

June 3-7 | Algoma Atelier of Sculpture and Art

5977 Fremont Road Algoma Learn the ancient art of bronze casting, using the lost wax process and today's technologies and materials. brensculpture.com

FIRST FRIDAY ART IN ALGOMA

June 7 | Historic Downtown Algoma

5-8PM New art exhibition opening receptions where you can often meet the artists. Sales, refreshments, great conversation, hands-on activities.

VON STIEHL WINERY SUMMER CONCERTS SERIES

June 8 | von Stiehl Winery

Time and band TBA. 115 Navarino St. This free Summer Concert Series runs every Saturday from June 8 to September 7, 2024. A cool Lake Michigan breeze, live music, a beautiful riverside view, a glass of your favorite wine, draft cider, spirits flight, or craft beer, and you have the recipe for the perfect afternoon. Check the event calendar on vonstiehl.com for more information and band line up.

LOST WAX BRONZE CASTING CLASSES

June 10-14 | Algoma Atelier of Sculpture and Art

5977 Fremont Road Algoma Learn the ancient art of bronze casting, using the lost wax process and today's technologies and materials. brensculpture.com

WELCOME GREAT LAKES VIKING CRUISE SHIPS & GUESTS

June 11 | Algoma Harbor

Come and join Algoma, see the Viking cruise ships and greet the passengers as they disembark! Take in all the sights and sounds of the area while you are here! Keep up to date on Facebook @cruisingintoalgomawi and on the Chamber's website: bit.ly/2024cruiseshipdays

COMMUNITY IMPROVEMENT OF ALGOMA ANNUAL CAR SHOW

June 15 | Downtown Algoma

7:30AM-3PM Steele Street Algoma Car show features many classes of quality show cars, trucks, and motorcycles in Downtown Algoma. Enjoy food, drink, music. Free entry for spectators. Algomaciofa.org

VON STIEHL WINERY SUMMER CONCERTS SERIES

June 15 | von Stiehl Winery

Time and band TBA. 115 Navarino St. This free Summer Concert Series runs every Saturday from June 8 to September 7, 2024. A cool Lake Michigan breeze, live music, a beautiful riverside view, a glass of your favorite wine, draft cider, spirits flight, or craft beer, and you have the recipe for the perfect afternoon. Check the event calendar on vonstiehl.com for more information and band line up.

Make your plans to join in the CRUISE SHIP DAYS festivities!

2024 Algoma Cruise Ship Days:

Wednesday, May 29, 2024

Tuesday, June 11, 2024

Friday, July 12, 2024

Thursday, July 25, 2024

Wednesday, August 7, 2024

Tuesday, August 20, 2024

Wednesday, September 18, 2024

Tuesday, October 1, 2024



Keep up to date on the Chamber's website (<https://bit.ly/2024cruiseshipdays>) and Cruising Into Algoma Facebook page (@cruisingintoalgomawi)

KEWAUNEE COUNTY BREAKFAST ON THE FARM

June 16 | Heim's Hillcrest Dairy

E3730 Rockledge Rd Heim's Hillcrest Dairy is the site for Kewaunee County Dairy Promotion Committee's 2024 Breakfast on the Farm. For more information: heimshillcrest.com.

VON STIEHL WINERY SUMMER CONCERTS SERIES

June 22 | von Stiehl Winery

Time and band TBA. 115 Navarino St. This free Summer Concert Series runs every Saturday from June 8 to September 7, 2024. A cool Lake Michigan breeze, live music, a beautiful riverside view, a glass of your favorite wine, draft cider, spirits flight, or craft beer, and you have the recipe for the perfect afternoon. Check the event calendar on vonstiehl.com for more information and band line up.

ALGOMA CONCERTS IN THE PARK

June 27 | Heritage Park

6-9PM Copper Box. Lake and Steele Sts. Next to the Algoma Marina Free concert series overlooking Lake Michigan. The natural sloping grounds welcomes you to bring your chairs and blankets and relax while enjoying a variety of music, von Stiehl wine and cider, and Ahnapee Brewery beer. Food concessions available. algoma.org/concerts/

VON STIEHL WINERY SUMMER CONCERTS SERIES

June 29 | von Stiehl Winery

Time and band TBA. 115 Navarino St. This free Summer Concert Series runs every Saturday from June 8 to September 7, 2024. A cool Lake Michigan breeze, live music, a beautiful riverside view, a glass of your favorite wine, draft cider, spirits flight, or craft beer, and you have the recipe for the perfect afternoon. Check the event calendar on vonstiehl.com for more information and band line up.

BELGIAN WAFFLE BREAKFAST

June 30 | Belgian Heritage Center

9AM-12PM 1255 County Road DK Brussels Belgian waffle breakfast to include waffles, scrambled eggs, Marchant's trippe (a traditional sausage from the Belgian community) and beverages. belgianheritagecenter.org

JULY

ALGOMA CONCERTS IN THE PARK

July 4 | Heritage Park

6-9PM Time Machine Band. Lake and Steele Sts. Next to the Algoma Marina Free concert series overlooking Lake Michigan. The natural sloping grounds welcomes you to bring your chairs and blankets and relax while enjoying a variety of music, von Stiehl wine and cider, and Ahnapee Brewery beer. Food concessions available. algoma.org/concerts/

FIRST FRIDAY ART IN ALGOMA

July 5 | Historic Downtown Algoma

5-8PM New art exhibition opening receptions where you can often meet the artists. Sales, refreshments, great conversation, hands-on activities.

VON STIEHL WINERY SUMMER CONCERTS SERIES

July 6 | von Stiehl Winery

Time and band TBA. 115 Navarino St. This free Summer Concert Series runs every Saturday from June 8 to September 7, 2024. A cool Lake Michigan breeze, live music, a beautiful riverside view, a glass of your favorite wine, draft cider, spirits flight, or craft beer, and you have the recipe for the perfect afternoon. Check the event calendar on vonstiehl.com for more information and band line up.

ALGOMA CONCERTS IN THE PARK

July 11 | Heritage Park

6-9PM Big Mouth & The Power Tool Horns. Lake and Steele Sts. Next to the Algoma Marina Free concert series overlooking Lake Michigan. The natural sloping grounds welcomes you to bring your chairs and blankets and relax while enjoying a variety of music, von Stiehl wine and cider, and Ahnapee Brewery beer. Food concessions available. algoma.org/concerts/

ALGOMA

Concerts in the Park

6-9 PM THURSDAYS JUN 27-AUG 15
HERITAGE PARK ALGOMA, WI

FREE OUTDOOR CONCERT SERIES!



CONCESSIONS AVAILABLE!

2024 SUMMER LINEUP!

JUN 27 COPPER BOX

JUL 11 BIG MOUTH & THE POWER TOOL HORNS

JUL 25 THE STRING BENDERS

AUG 08 CARBON ROAD

JUL 04 TIME MACHINE BAND

JUL 18 MODERN DAY DRIFTERS

AUG 01 CONSCIOUS PILOT

AUG 15 THE COUGARS





KEWAUNEE COUNTY FAIR

July 11-14 | Kewaunee County Fairgrounds

625 3rd St. Luxemburg. Traditional County fair family fun! Rides, games, entertainment, & local talent. FFA, 4-H, & Open Class Exhibitor projects. kewauneecountyfair.com

WELCOME GREAT LAKES VIKING CRUISE SHIPS & GUESTS

July 12 | Algoma Harbor

Come and join Algoma, see the Viking cruise ships and greet the passengers as they disembark! Take in all the sights and sounds of the area while you are here! Keep up to date on Facebook @cruisingintoalgomawi and on the Chamber's website: bit.ly/2024cruiseshipdays

VON STIEHL WINERY SUMMER CONCERTS SERIES

July 13 | von Stiehl Winery

Time and band TBA. 115 Navarino St. This free Summer Concert Series runs every Saturday from June 8 to September 7, 2024. A cool Lake Michigan breeze, live music, a beautiful riverside view, a glass of your favorite wine, draft cider, spirits flight, or craft beer, and you have the recipe for the perfect afternoon. Check the event calendar on vonstiehl.com for more information and band line up.

ALGOMA CONCERTS IN THE PARK

July 18 | Heritage Park

6-9PM Modern Day Drifters. Lake and Steele Sts. Next to the Algoma Marina Free concert series overlooking Lake Michigan. The natural sloping grounds welcomes you to bring your chairs and blankets and relax while enjoying a variety of music, von Stiehl wine and cider, and Ahnapee Brewery beer. Food concessions available. algoma.org/concerts/

OUTDOOR MOVIE

July 19 | Legion Park

7PM Movie TBA. The Algoma Public Library and Community Development Committee present their annual Outdoor Movie. Bring your lawn chairs, blankets, and snacks for a free family friendly evening at the Movies! Visit algomapubliclibrary.org for more details.

VON STIEHL WINERY SUMMER CONCERTS SERIES

July 20 | von Stiehl Winery

Time and band TBA. 115 Navarino St. This free Summer Concert Series runs every Saturday from June 8 to September 7, 2024. A cool Lake Michigan breeze, live music, a beautiful riverside view, a glass of your favorite wine, draft cider, spirits flight, or craft beer, and you have the recipe for the perfect afternoon. Check the event calendar on vonstiehl.com for more information and band line up.

VIOLENCE INTERVENTION PROJECT'S (VIP) ANNUAL GOLF OUTING

July 22 | Northbrook Golf & Grill

Time TBA. 407 Northbrook Rd. Luxemburg Choose from 18 or 9 holes with cart and meal included. Visit VIP's website vipadvocates.net or Facebook @ViolenceInterventionProject for details.

WELCOME GREAT LAKES VIKING CRUISE SHIPS & GUESTS

July 25 | Algoma Harbor

Come and join Algoma, see the Viking cruise ships and greet the passengers as they disembark! Take in all the sights and sounds of the area while you are here! Keep up to date on Facebook @cruisingintoalgomawi and on the Chamber's website: bit.ly/2024cruiseshipdays

ALGOMA CONCERTS IN THE PARK

July 25 | Heritage Park

6-9PM The String Benders. Lake and Steele Sts. Next to the Algoma Marina Free concert series overlooking Lake Michigan. The natural sloping grounds welcomes you to bring your chairs and blankets and relax while enjoying a variety of music, von Stiehl wine and cider, and Ahnapee Brewery beer. Food concessions available. algoma.org/concerts/

VON STIEHL WINERY SUMMER CONCERTS SERIES

July 27 | von Stiehl Winery

Time and band TBA. 115 Navarino St. This free Summer Concert Series runs every Saturday from June 8 to September 7, 2024. A cool Lake Michigan breeze, live music, a beautiful



riverside view, a glass of your favorite wine, draft cider, spirits flight, or craft beer, and you have the recipe for the perfect afternoon. Check the event calendar on vonstiehl.com for more information and band line up.

AUGUST

ALGOMA CONCERTS IN THE PARK

August 1 | Heritage Park

6-9PM Conscious Pilot. Lake and Steele Sts. Next to the Algoma Marina Free concert series overlooking Lake Michigan. The natural sloping grounds welcomes you to bring your chairs and blankets and relax while enjoying a variety of music, von Stiehl wine and cider, and Ahnapee Brewery beer. Food concessions available. algoma.org/concerts/

FIRST FRIDAY ART IN ALGOMA

August 2 | Historic Downtown Algoma

5-8PM New art exhibition opening receptions where you can often meet the artists. Sales, refreshments, great conversation, hands-on activities.

VON STIEHL WINERY SUMMER CONCERTS SERIES

August 3 | von Stiehl Winery

Time and band TBA. 115 Navarino St. This free Summer Concert Series runs every Saturday from June 8 to September 7, 2024. A cool Lake Michigan breeze, live music, a beautiful riverside view, a glass of your favorite wine, draft cider, spirits flight, or craft beer, and you have the recipe for the perfect afternoon. Check the event calendar on vonstiehl.com for more information and band line up.

WELCOME GREAT LAKES VIKING CRUISE SHIPS & GUESTS

August 7 | Algoma Harbor

Come and join Algoma, see the Viking cruise ships and greet the passengers as they disembark! Take in all the sights and sounds of the area while you are here! Keep up to date on Facebook @cruisingintoalgomawi and on the Chamber's website: bit.ly/2024cruiseshipdays

SHANTY DAYS

ALGOMA WISCONSIN'S ANNUAL
CELEBRATION OF THE LAKE
AUGUST 9, 10, & 11, 2024

WWW.ALGOMA.ORG



AREA'S LARGEST PARADE, SAT NOON



5K & KIDS SUPER HERO FUN RUN, SAT AM



FRIDAY

4-8 PM: SUZIE & THE
DETONATORS
8 PM-MIDNIGHT: THAT 90'S BAND



SATURDAY

1-4 PM: 7000APART
4-8 PM: MODEL CITIZENS
8 PM-MIDNIGHT: PINK HOUSES



SUNDAY

11 AM - 1:30 PM: THE WORKS
1:30 - 4:30 PM: COPPER BOX
4:30-8:30 PM: THE LEFTOVERS BAND

PHOTO COPYRIGHT 2017 JOSH KOHANEK. COURTESY OF THE ROBERT WOOD JOHNSON FOUNDATION.

SAT-SUN
150+ ARTS &
CRAFTS VENDORS

FIREWORKS SUNDAY EVENING!

BEACH VOLLEYBALL

CAR SHOW ON SATURDAY

FISHING CONTEST

BINGO



ALGOMA CONCERTS IN THE PARK**August 8 | Heritage Park**

6-9PM Carbon Road. Lake and Steele Sts.
Next to the Algoma Marina Free concert series overlooking Lake Michigan. The natural sloping grounds welcomes you to bring your chairs and blankets and relax while enjoying a variety of music, von Stiehl wine and cider, and Ahnapee Brewery beer. Food concessions available. algoma.org/concerts/

SHANTY DAYS CELEBRATION OF THE LAKE**August 9-11 | Crescent Beach**

Legion Park & Fremont St. Algoma Three-day festival featuring one of WI's largest parades, a car cruise, 150+ arts and crafts & street fair vendors, 5k walk/run as part of the Bellin Titletown Run Series, great food, beach volleyball tourney, fireworks, kid's area, fishing contest, live music, & entertainment for the entire family! algoma.org/shanty-days/

VON STIEHL WINERY SUMMER CONCERTS SERIES**August 10 | von Stiehl Winery**

Time and band TBA. 115 Navarino St. This free Summer Concert Series runs every Saturday from June 8 to September 7, 2024. A cool Lake Michigan breeze, live music, a beautiful riverside view, a glass of your favorite wine, draft cider, spirits flight, or craft beer, and you have the recipe for the perfect afternoon. Check the event calendar on vonstiehl.com for more information and band line up.

ALGOMA CONCERTS IN THE PARK**August 15 | Heritage Park**

6-9PM The Cougars. Lake and Steele Sts.
Next to the Algoma Marina Free concert series overlooking Lake Michigan. The natural sloping grounds welcomes you to bring your chairs and blankets and relax while enjoying a variety of music, von Stiehl wine and cider, and Ahnapee Brewery beer. Food concessions available. algoma.org/concerts/

FUTURES WINE TASTING**August 17 | von Stiehl Winery**

10AM-3:30PM 115 Navarino St. Join von Stiehl for their Futures Wine Tasting in their barrel-aging cellars. The winemaking team knows their wines and grapes inside and out and are eager to host you for a sampling of their best batches already bottled and future fermentations that need a bit more time in barrels! \$35 per person. vonstiehl.com

SOAR ON THE SHORE KITE & BEACH FESTIVAL**August 17 | Crescent Beach**

11AM-4PM Hwy 42/Lake St. Algoma Free family fun on the shores of Lake Michigan. Professional stunt kites, giant show kites, crafts, scavenger hunt & more! Brought to you by Friends of Crescent Beach, WI Kites Club, & Algoma Area Chamber of Commerce. Friendsofcrescentbeach.org

VON STIEHL WINERY SUMMER CONCERTS SERIES**August 17 | von Stiehl Winery**

Time and band TBA. 115 Navarino St. This free Summer Concert Series runs every Saturday from June 8 to September 7, 2024. A cool Lake Michigan breeze, live music, a beautiful riverside view, a glass of your favorite wine, draft cider, spirits flight, or craft beer, and you have the recipe for the perfect afternoon. Check the event calendar on vonstiehl.com for more information and band line up.

TRADITIONAL BELGIAN KERMISS**August 18 | Belgian Heritage Center**

11AM-4PM 1255 County Road DK Brussels
 Authentic Belgian Cuisine: Homemade Booyah, Trippe, Jutt, Belgian pies, tortes and more!
belgianheritagecenter.org

WELCOME GREAT LAKES VIKING CRUISE SHIPS & GUESTS**August 20 | Algoma Harbor**

Come and join Algoma, see the Viking cruise ships and greet the passengers as they disembark! Take in all the sights and sounds of the area while you are here! Keep up to date on Facebook [@cruisingintoalgomawi](https://www.facebook.com/cruisingintoalgomawi) and on the Chamber's website: bit.ly/2024cruiseshipdays

VON STIEHL WINERY SUMMER CONCERTS SERIES**August 24 | von Stiehl Winery**

Time and band TBA. 115 Navarino St. This free Summer Concert Series runs every Saturday from June 8 to September 7, 2024. A cool Lake Michigan breeze, live music, a beautiful riverside view, a glass of your favorite wine, draft cider, spirits flight, or craft beer, and you have the recipe for the perfect afternoon. Check the event calendar on vonstiehl.com for more information and band line up.

VON STIEHL WINERY SUMMER CONCERTS SERIES**August 31 | von Stiehl Winery**

Time and band TBA. 115 Navarino St. This free Summer Concert Series runs every Saturday from June 8 to September 7, 2024. A cool Lake Michigan breeze, live music, a beautiful riverside view, a glass of your favorite wine, draft cider, spirits flight, or craft beer, and you have the recipe for the perfect afternoon. Check the event calendar on vonstiehl.com for more information and band line up.

SEPTEMBER**FIRST FRIDAY ART IN ALGOMA****September 6 | Historic Downtown Algoma**

5-8PM New art exhibition opening receptions where you can often meet the artists. Sales, refreshments, great conversation, hands-on activities.

VON STIEHL WINERY SUMMER CONCERTS SERIES**September 7 | von Stiehl Winery**

Time and band TBA. 115 Navarino St. This free Summer Concert Series runs every Saturday from June 8 to September 7, 2024. A cool Lake Michigan breeze, live music, a beautiful riverside view, a glass of your favorite wine, draft cider, spirits flight, or craft beer, and you have the recipe for the perfect afternoon. Check the event calendar on vonstiehl.com for more information and band line up.

WELCOME GREAT LAKES VIKING CRUISE SHIPS & GUESTS**September 18 | Algoma Harbor**

Come and join Algoma, see the Viking cruise ships and greet the passengers as they disembark! Take in all the sights and sounds of the area while you are here! Keep up to date on Facebook [@cruisingintoalgomawi](https://www.facebook.com/cruisingintoalgomawi) and on the Chamber's website: bit.ly/2024cruiseshipdays

WET WHISTLE WINE FEST**September 20-21 | Community Improvement of Algoma & von Stiehl Winery | Legion Park & von Stiehl Winery**

Friday, 5 - 9PM 115 Navarino St. von Stiehl wine tasting, music by Big Mouth & The Power Tool Horns, specialty foods. Free admission Friday.

Saturday, 10AM-6PM Grape Stomp, music by Fork in the Road and Conscious Pilot, wine tasting, specialty foods. \$10 admission Saturday.

Wet Whistle Wine Fest is a fundraiser for the Community Improvement of Algoma, and the Algoma Fire and Rescue, offering award-winning wines, a grape stomp, hearty sandwiches, & live music! Algomaciofa.org or vonstiehl.com

RED BARN CORN MAZE**Mid Sept - Oct | Red Barn Corn Maze**

SATs and SUNs. 7125 Co Rd J Forestville
 More than just a corn maze. Spend hours of family fun on the farm: play games, pick pumpkins, and meet the animals! Dates and rates: redbarnmaze.com

ZOOBILEE**September 28 | Bruemmer Park Zoo**

10AM - 4PM E4280 Co Rd F Kewaunee
 The Zoological Society of Kewaunee County's annual Zoobilee. Bring the family for free kids activities, a car show, and tractor rides. Raffles, food and beverages for sale, numerous vendors selling books, crafts and many other fun items. See you at the zoo! Bruemmerparkzoo.com

VIOLENCE INTERVENTION PROJECT'S (VIP) HISPANIC HERITAGE MONTH CARNIVAL**September 28 | Kewaunee Heritage Farm**

12-5PM N2251 State Highway 42, Kewaunee
 Celebrate Hispanic Heritage Month with family and friends! Fun games, face painting, raffle baskets, music from a local DJ along with outreach booths from community partners, and traditional Mexican, Salvadorian, and Honduran finger foods to enjoy!

Algoma, WI

SOAR on the SHORE

EVENTS

BEACH AND
KITE FESTIVAL

SATURDAY AUGUST 17, 2024

10th Annual
FREE FAMILY
FUN EVENT

Food &
Beverages

Nature
Scavenger
Hunt

Pro Stunt Kites
Giant Show
Kites

Crafts for Kids
Candy Drop
Giant Bubbles
Balloon Twisting
Face Painting
DJ & More!

More Information:
algoma.org/soar



11AM - 4PM, Crescent Beach
Raindate: August 18

Brought to you by:
Friends of Crescent Beach
and the Algoma Area Chamber



Wet Whistle 22nd ANNUAL WINE FESTIVAL



\$10*
Saturday Admission

**SEPT 20-21, 2024
ALGOMA, WI**

A CELEBRATION FOR THE SENSES

Grape Stomp * Specialty Foods * Wine & Beer * Live Music

FRI: 5-9PM Big Mouth & The Power Tool Horns SAT: 10AM-1:30PM Fork in the Road 2-6PM Conscious Pilot

vonStiehl.com/fest • 920-487-5208
@ Legion Memorial Park and von Stiehl Winery
Wine tasting at von Stiehl Winery • 115 Navarino

***FREE ON FRIDAY.** Under age 21 must be accompanied by an adult. Canned donation to Food Pantry is much appreciated!

Sponsored by the Community Improvement of Algoma

OCTOBER

WELCOME GREAT LAKES VIKING CRUISE SHIPS & GUESTS

October 1 | Algoma Harbor

Come and join Algoma, see the Viking cruise ships and greet the passengers as they disembark! Take in all the sights and sounds of the area while you are here! Keep up to date on Facebook @cruisingintoalgomawi and on the Chamber's website: bit.ly/2024cruiseshipdays

FIRST FRIDAY ART IN ALGOMA

October 4 | Historic Downtown Algoma

5-8PM New art exhibition opening receptions where you can often meet the artists. Sales, refreshments, great conversation, hands-on activities.

THE GREAT FIRE OF 1871 REMEMBRANCE

October 5 | Belgian Heritage Center

10AM 1255 County Road DK Brussels

Witness a re-enactment of the Great Fire of 1871 and how it forever changed the lives of the Belgian settlers and influenced the region for generations. belgianheritagecenter.org

RED BARN CORN MAZE

Mid Sept - Oct | Red Barn Corn Maze

SATs and SUNs. 7125 Co Rd J Forestville

More than just a corn maze. Spend hours of family fun on the farm: play games, pick pumpkins, and meet the animals! Dates and rates: redbarnmaze.com

VIOLENCE INTERVENTION PROJECT'S (VIP) LIGHTING CEREMONY

October 22 | Grace Lutheran Church

5:30-8PM N5789 State Hwy 42, Kewaunee

Candles are lit in memory of lives lost due to domestic violence in Wisconsin and honors survivors VIP has helped in 2024. Details vipadvocates.net or Facebook @ViolenceInterventionProject

NOVEMBER

FIRST FRIDAY ART IN ALGOMA

November 1 | Historic Downtown Algoma

5-8PM New art exhibition opening receptions where you can often meet the artists. Sales, refreshments, great conversation, hands-on activities.

ANNUAL GIVE BACK TO VETERANS AT AHNAPÉE BREWERY

November 9 | Ahnapee Brewery Taproom

202 Clark St. 100% of the proceeds of a specially made pin will be donated to Fox Valley Veterans Council. \$1 per pint of Little Soldier will also be donated. ahnapeebrewery.com

KEWAUNEE COUNTY CHRISTMAS STROLL

November 22, 23, 29, 30

10AM-4PM All Around Kewaunee County Shop throughout the county and win prizes along the way. algoma.org/stroll/

11th ANNUAL ALGOMA AREA CHAMBER'S SMALL BUSINESS SATURDAY CELEBRATION

November 30 | All Around Algoma

Celebrate the small local businesses that are the heart and soul of Algoma! algoma.org/sbs/

16th ANNUAL CHRISTMAS OPEN HOUSE

November 30 | North Water Bakery

9AM-1PM 133 N. Water St. Fun for the whole family! Santa and his reindeer and horse-drawn wagon rides through town. northwaterbakeryanddeli.com

AHNAPÉE BREWERY AUTUMNFEST

November 30 | Ahnapee Brewery Taproom

12-4PM 202 Clark St. Algoma Specialty pin tapping, food truck, live music and celebrate Autumn!

DECEMBER

FIRST FRIDAY ART IN ALGOMA

December 6 | Historic Downtown Algoma

5-8PM New art exhibition opening receptions where you can often meet the artists. Sales, refreshments, great conversation, hands-on activities.



Tandem Photography of Door County


The Grain Loft
EVENT VENUE



Photo & Film by Sarah Elizabeth



Photo & Film by Sarah Elizabeth



Photo & Film by Sarah Elizabeth

RUSTIC . INDUSTRIAL . ELEGANCE
Perfect for any of life's special occasions
EVENTS@GRAINLOFTWISCONSIN.COM
WWW.GRAINLOFTWISCONSIN.COM



Photo & Film by Sarah Elizabeth

Experience the Algoma Area



At a Glance

Things to Do:

Crescent Beach/Boardwalk.....	16
Fishing Lake Michigan.....	26
Tour Historic Walking Tour.....	43
Murals.....	20
Kayaking.....	16
Area Tours.....	22
Unique Arts Scene.....	20
Outdoor Summer Music.....	10
Concerts.....	10
Ahnapee State Trail.....	16
Chamber Member Directory.....	52

Things to Rent:

- **Bay Shore Outfitters**..... 34
*electric-assist bike | kayak
Swan paddle boat | stand-up
paddleboard (SUP)*
- **The River by Bayshore**..... 25
*kayak | Swan paddle boat
stand-up paddleboard (SUP)*
- **Timber Trail Campground**..... 39
kayak | canoe | small fishing boat

Ahnapee State Trail

Algoma is your gateway to this nearly 50-mile-long scenic trail. Formerly the railroad bed of the Ahnapee & Western Railroad, the trail has a crushed limestone surface and is used for walking, running, biking, hiking, horseback riding, snowshoeing, cross-country skiing, and snowmobiling. Enjoy the sights and sounds of the Ahnapee River, mixtures of evergreen glades, farmland, prairies, and wooded areas teeming with wildlife and native wildflowers.

Trailheads with parking are located on the corner of 6th and Perry Street (County S) and on County M just north of the city which also serves as the entrance to the northern portion of the Ice Age National Scenic Trail

The Ice Age National Scenic Trail is a 1,000 mile footpath that traces the retreat of continental glaciation over 12,000 years ago. Part of the trail includes the 1/2 mile Crescent Beach Boardwalk, Harbor Walk path and the 48 mile rails-to-trails Ahnapee State Trail.

Need a bike rental?

Check out **Bay Shore Outfitters**
219 State Street in Algoma

Also allowed on the trail: dogs on a leash, horses from April 15 – November 15, and snowmobiles in the winter when the DNR deems them open. No fee for use. For more information visit <https://dnr.wisconsin.gov/topic/parks/ahnapee> or contact the **Kewaunee County Promotions & Recreation Department at 920-388-0444 or visitorinfo@kewauneeco.org**.

Paddle the Ahnapee River

The Ahnapee River is a flatwater paddle in a wide, sometimes marsh-like estuary – perfect for silent sport enthusiasts. Dammed to the north at Forestville, it gently winds its way to its ultimate destination - Lake Michigan. Launch your kayak in the Ahnapee River at **Olson Park**, N8108 Hwy 42, north of Algoma, and **The River by Bayshore** at 87 Second St or on Lake Michigan at **Crescent Beach**.

Crescent Beach And Boardwalk

Enjoy the Lake Michigan Shoreline with a walk along Algoma’s award-winning boardwalk. Connecting the Algoma Visitor Center to the south to the Algoma Marina to the north, the boardwalk is handicap accessible on both ends. Built by volunteers, the ½-mile boardwalk is made from recycled plastic lumber and there are several benches along the way so you can relax and take it all in.

Crescent Beach offers a front-row view of the awe and beauty that only a Great Lake can give. From stunning sunrises to hot sand between your toes, the lakeshore is the perfect place to spend the day. Cool off on sandy Crescent Beach in the hot summer months. Play volleyball, launch your kayak, or just dip your toes in refreshing Lake Michigan.

Pack a lunch or visit one of the many area restaurants for a takeout meal or a scoop of ice cream, and head to the beach where you



will have the best view in the area at one of the many picnic tables and benches that overlook the lake. Visible from anywhere on the beach, the Algoma Pierhead Lighthouse makes the perfect backdrop for your photos.

For your convenience, there is a changing room at the north end of the beach. Public restrooms are located a little farther north at Heritage Park and in the Algoma Visitor Center on the south end of the boardwalk.

Winter offers its own beauty with the ice shelves, the sun sparkling on the water. Look up and you just may catch a glimpse of the eagles that nest nearby.

There is no fee to use the beach or boardwalk. Leashed dogs are allowed on the boardwalk year-round and on the beach/sand from October 1 - April 30.

Fishing

If you are looking to relax on a secluded waterway, drill a hole in some ice, stand on a pier, or venture out on the 'big pond', Kewaunee County has a fishing experience just for you!

Lake Michigan Fishing: Algoma is known as the Sportfishing Capital of the Great Lakes. A world-class Charter fleet is ready to take you out for your trophy fish and the experience of a lifetime. Going out on your own? The Algoma Marina has a double launch ramp and fish cleaning station.
visitalgomawi.com/fishing/

Inland Fishing: Kewaunee County has several inland fishing lakes and the rivers and tributaries make Northeast Wisconsin your year-round fishing destination. co.kewaunee.wi.gov

Lighthouses

The Algoma and Kewaunee lighthouses, while very different structures, make the perfect backdrops for photos. Drive up the Door Peninsula to see 11 more lighthouses watching over nearly 300 miles of shoreline.

Algoma Fire and Rescue Monument

Located on Hwy 42 just south of the Algoma Visitor Center, the Fire and Rescue Monument was dedicated in June 2012 to honor the hundreds of volunteer firefighters and members of the rescue squad in Algoma. The granite walls are marked with about 300 names of the men and women who have voluntarily given their time to keep Algoma safe since 1874.

Works Progress Administration (WPA) Staircase

Just South of the Fire and Rescue Monument is a stone and concrete staircase built in 1939 as part of the lakeshore beautification project funded by the WPA. The program was started by Franklin D. Roosevelt to create jobs during the depression.



Family Fun!

- Corn Maze
- Farm Animals
- Pumpkins & Gourds
- Hay Rides & Barrel Train
- Bale Mountain & slide
- Games and More!



Hours of fun for all ages!
Open Saturdays & Sundays
Mid-September thru October

Visit our website for hours & details:
www.RedBarnMaze.com
7125 County Road J, Forestville
920-495-6293 (920-495-MAZE)



Bowling

Algoma Pizza Bowl 401 2nd St has open bowling daily. Enjoy dining and refreshments. algomapizzabowl.com

Golfing

Kewaunee County has two wonderful courses that are open to the public.

The Alaskan Golf Club, located right on HWY 42 just 5 miles south of Algoma offers 9 holes of golf with holes along East Alaska Lake, a driving range, clubhouse, and pro shop. (920) 388-3940.

For 18 holes, visit **Northbrook Golf & Grill**, 407 Northbrook Rd in Luxemburg, just 15 miles west of Algoma. Along with a pro shop and practice range, you have access to a full-service bar and restaurant with seasonal outdoor dining. northbrookgolf.com

Disc Golf

Peterson Park Disc Golf Course is a beginner-friendly 12-hole disc golf course. This course

plays through the park with wooden tee pads and features 6 open holes and 6 wooded holes. Free to play. Located in Peterson Park accessible from Church St.

Winter Park Disc Golf Course is a 27-hole course located at N3787 Ransom Moore Lane, in Kewaunee, WI. Season typically runs from May-November. Fee is \$5 Daily.

The River by Bayshore

Relax along the Ahnapee River or rent a kayak, paddleboard, or swan paddle boat. Play some games or just hang out in a hammock and enjoy the sights and sounds.

87 2nd St Algoma (920) 487-8215
bayshoreoutfitters.com

Christmas Tree Ship Point

Overlooking the Algoma Harbor, the point is named in honor of ship captains who delivered Christmas trees from Northern Wisconsin and

the UP of Michigan to Milwaukee and Chicago.

Captain Herman Schuenemann (a.k.a Captain Santa) from Algoma perished along with the crew of the Rouse Simmons in a Lake Michigan storm off the coast of Two Rivers, WI in November 1912.

Thanks to a grant, the point underwent an upgrade in 2019 but was destroyed by high winds and Lake Michigan's high waters. In October 2021, a steel tree sculpture built by Olson Fabrication and donated by Bruce and Chris Steinhagen, was installed. The point has been restored, complete with a new bench and sign.

Besadny Anadromous Fish Facility

Peer through two underwater viewing windows to get a close-up view of trout and salmon climbing the fishing ladders as they make their way from Lake Michigan to special holding tanks to spawn. Visitors can also hike



Peterson Park



Legion Park



the nature trails, stroll by the large prairie gardens, and view wildlife! BAFF is located at **N3884 Ransom Moore Ln** in Kewaunee WI. Visit the Wisconsin DNR's website or call the facility directly at (920) 388-1025 for more information.

Bruemmer Park Zoo

See Arctic foxes, bobcats, peacocks, exotic pheasants and more. An African Animal Statue Garden has life-size statues of a lion, rhinoceros, zebra, giraffe, and an elephant. Construction of a new pheasant exhibit began in 2023. There are picnic areas and walking trails. Located at **E4280 Co Rd F Kewaunee**, the zoo is open daily from 7am until sunset year-round. Admission is free. bruemmerparkzoo.com

Riverview ATV Park

The only ATV trail park in Northeast Wisconsin! Open from early May to mid-November. ATV, UTV and OHM riders can enjoy 20 miles of ATV trails and mountain bikers have 3 miles of trails to ride. There is a sheltered picnic area and restrooms. One-day pass or season pass required. **E3725 Co Rd L Kewaunee** kewauneeatvpark.com

Winter Park

Enjoy snowboarding, snow tubing, snowshoeing and skiing. The tubing hill has five lanes approximately 450 feet long with a vertical drop of 70 feet. Magic Carpet, a standing conveyor belt system, takes riders to the top. There is a snowshoe trail system, an onsite heated chalet with concessions, tables, chairs, lockers, indoor restrooms, and equipment rental. The park has a 27-hole disc golf course during spring, summer, and fall. Adjacent to the Winter Park is the Dana Farms outdoor ice skating rink - free to use but bring your own skates. Located at **N3787 Ransom Moore Ln** Call (920) 388-7199 or check Facebook @WinterParkKewaunee-County for current conditions and fees.



BELGIAN HERITAGE CENTER

BELGIAN HERITAGE CENTER



Visit our center in the heart of the Namur Historic District listed on the National Register of Historic Places and designated a National Landmark.

Exhibits and events highlight the traditions, language, food, and architecture of the largest Belgian ethnic settlement in the U.S. Includes the 1894 schoolhouse and roadside chapel of St. Roch.

Open Friday - Sunday, 10AM - 3PM, and by appointment Memorial Day weekend through October.

CONTACT INFORMATION

1255 Cty Rd DK • Brussels, WI 54204
(920) 825-7319
www.belgianheritagecenter.org
tourinfo@belgianheritagecenter.org





Experience Algoma's History, Architecture & Art

Capture the essence of yesteryear and the robust history of Algoma by taking the self-guided Historic Walking Tour. Learn about the gorgeous Victorian-style homes and hotels then and now and everything in between.

Along with that, take in the beautiful Walldog murals seen on some of the buildings that tell the story of Algoma's rich history including the Kodan Feed

Store, Reinhart Bros Shoes, and Ahnapee & Western Railroad, just to name a few.

Expanded Mural Experience

Algoma is home to 17 murals (and counting!) from the Walldog murals originally painted in 2007 to eight contemporary murals added since 2015. All but one mural is located outside.

These self-guided walking tours last

anywhere from thirty minutes to an hour. Be sure to plan extra time to visit the city's bustling shops, restaurants, galleries, and breathtaking waterfront. Grab tour brochures from the Algoma Visitor Center or download copies here: bit.ly/artinalgomawi

More Than Murals

The murals are just one example of the growing art scene in Algoma. There are



A place to find unexpected treasures, visit us to find artwork and fine crafts by a variety of local artists.



Fused & Stained Glass
Glass Photography
Kaleidoscopes
Astro Photography
Jewelry
Paintings
Textiles
and More



Fused Glass



Glass Photography



Kaleidoscopes



Astro Photography

219 Steele St, Algoma, WI 54201
920-591-2883 - info@ladybugstudiogallery.com
ladybugstudiogallery.com






currently over 11 active galleries, studios, and artisan retail outlets with more planned in 2024.

On the first Friday of each month, Algoma's historic downtown businesses open their doors for an evening of art exhibitions for First Friday Art in Algoma. You will find clay, glass, painting, multi-media, printing,

photography, literary arts, drawing, tattoo artists, jewelry, performing arts, sculpture, floral artistry, pottery, ceramics, wood, and more.

Whether you are a casual admirer or a serious art collector, Algoma, WI is the place to be for the ultimate art experience.



Scan Me
for the
Art Experience!



Mural by Alicia Czeckowski

Robert Ray Gallery

Algoma, Wisconsin

Fine Art & Antiques



NEW Event Space Available!

May-October
Wed.-Fri. 12pm to 5pm
Sat. 11am to 5pm
Sun. 1pm to 4pm
November-April
Sat. 11am to 5pm
Sun. 1pm to 4pm



Bronze by William Jaquet



Oil by Patrick Farrell

520 Parkway Street
 P.O. Box 95
 Algoma, WI 54201-0095
 920.495.6677

robertraygallery.com

RiverEdge Galleries

Visit our other Location!
 established in 1984
 fine art · antiques · sculpture garden

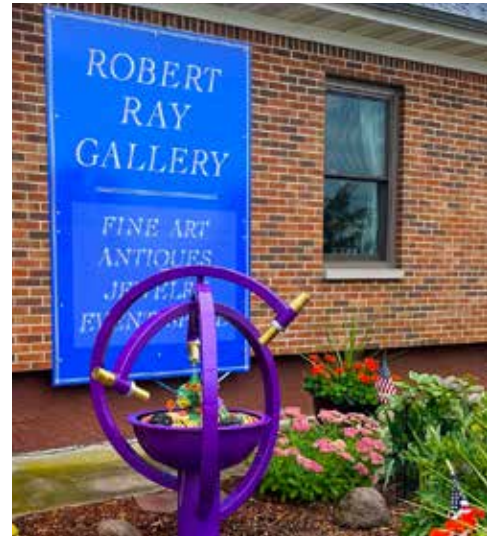


432 East Main Street
 P.O. Box 297
 Mishicot, WI 54228
 920.755.4777



Village of Mishicot

riveredgegalleries.net



FISHLINE STUDIOS



Art Collective + Studio

213 Steele Street
Downtown Algoma

(920) 473-0415
fishlinestudios.com

Area Tours

von Stiehl Winery Tours

Wisconsin's oldest licensed winery. See the Civil War era underground wine cellars and 10,000+ square foot wine production facility. Call (920) 487-5208 for reservations. 115 Navarino St. Algoma. vonstiehl.com

Historic Walking Tour & Downtown Walldog Wave Murals

Brochures for this self-guided tour are available at the Algoma Visitor Center 1226 Lake Street (Hwy 42) or bit.ly/artinalgomawi. See page 43 for more walking tour photos.

Experience the Algoma Arts Community

Enjoy Algoma's 17 murals (and counting!) and visit the art galleries at your own pace. bit.ly/artinalgomawi

Belgian Heritage Center

Tour the Namur National Historic District. See traditional Belgian homes, visit charming roadside chapels, experience Belgian food, and hear the Walloon language. To arrange a tour, call (920) 493-5969 or email tourinfo@belgianheritagecenter.org. 1255 County DK Brussels, WI. belgianheritagecenter.org

Heim's Hillcrest Dairy

Tour the dairy farm that provides milk for Belgioioso cheese and the site for the 2024 Kewaunee County Breakfast on the Farm. Call 920-536-0652 to arrange your tour. heimshillcrest.com

Ebert Enterprises Dairy Farm Tour

Tour the seventh generation dairy farm that provides milk for Agropur to produce Mozzarella cheese and marvel at the round rotary parlor where the cows are milked. Call 920-487-9932 to arrange your tour. ebertent.com



von Stiehl Winery Tours



Explore Kewaunee County

World's Tallest Grandfather Clock

No trip to Kewaunee County would be complete without a photo op next to the World's Tallest Grandfather Clock! The clock overlooks the Kewaunee Harbor at the corner of Miller Street and Highway 42, at the Kewaunee trailhead of the Ahnapee State Trail. Read about its story at kewaunee.org/grandfather-clock

Tug Ludington

This World War II era tug participated in the D-Day invasion of Normandy, joined the U.S. Army Transportation Corps after World War II and in 1947 was transferred to Kewaunee, WI and was used in the construction and maintenance of many harbors on the Great Lakes. It now sits in Harbor

Park, in Downtown Kewaunee and is registered in the National and State Register of Historic Places. For a small fee, the tug is open to visitors from Memorial Day Weekend until Labor Day. kewaunee.org/tug-ludington

Kewaunee County History Center (KCHC)

Kewaunee County's rich history comes to life at the KCHC with over 20,000 photographs, thousands of documents such as tax records, indexes of deaths/marriages/births, early land ownership, school histories, veteran histories, maps, and the Fresnel Lens from the Kewaunee Pierhead Lighthouse and more. **The KCHC is maintained by the Kewaunee County Historical Society (KCHS) and is located at 217 Ellis St. in Kewaunee.**

Kewaunee County Jail Museum

The KCHS Jail Museum sits on the corner of Vliet and Dodge Streets in Kewaunee. Unique displays throughout the museum showcase eras of Kewaunee County such as period rooms, a living room, and bedroom. The remainder of the building, including the jail cells and basement, is devoted to displaying various artifacts. kewauneehistory.com.

Kewaunee County Fair

The Kewaunee County Fairgrounds located in Luxemburg is home to the annual 4-day Kewaunee County Fair and The 'Burg Speedway. The fairgrounds are available to be rented out for public use such as private parties including wedding receptions and other events. Facilities that can be rented include an exhibition hall, conference rooms, barns, open-air shelters.



Explore Green Bay

Just a short drive from Algoma, there is more to see in Green Bay, WI! Visit greenbay.com for a complete list of Green Bay events and attractions.

Green Bay Packers & Lambeau Field

From tailgating to Titledown, every trip to Northeast Wisconsin should include a visit to Green Bay and Lambeau Field. Home of one of the most storied franchises in the NFL, the Green Bay Packers is the only professional sports franchise to be completely owned by its fans and offers one the greatest fan experiences inside or outside Lambeau Field.

Get an inside look of Lambeau Field by taking a stadium tour, then enhance your experience by walking through the Packers Hall of Fame. Make sure to get your Cheesehead at the Packers Pro Shop before you leave.

During training camp, you can become a famed 'Railbird' by watching the team practice at Ray Nitschke Field which is located across the street from Lambeau.

More photo-ops await outside the Lambeau Field Atrium where you can practice your Lambeau Leap and pose with Packers legends Curly Lambeau and Vince Lombardi. **1265 Lombardi Ave. packers.com**

Titletown

Just to the west of Lambeau Field is a park appropriately named Titletown. Family fun awaits with an ice skating rink and snow tubing hill in winter, and in the summer outdoor games, free, daily activities, a unique playground and a full-size football field in the heart of the action.

There are endless opportunities for fun at Titletown, with games and activities available any time the park is open. **1065 Lombardi Ave. titledown.com**

Bay Beach Amusement Park

Home of the Zippin Pippin roller coaster, the park has amusement rides for every age including the Sea Dragon, Falling Star, Bumper Cars, and the Big Wheel. Ride tickets are just \$.25 each with rides requiring one to four tickets per rider.

Visitors can get souvenirs and there are plenty of concessions located throughout the park. Other amenities include a picnic area, playgrounds, restrooms, and plenty of parking.

Admission to the park is free. The typical season runs from May – September. **1313 Bay Beach Rd. baybeach.org**

Bay Beach Wild Life Sanctuary

Located across the street from Bay Beach Amusement Park, the 600-acre sanctuary features live animal exhibits, educational opportunities, miles of hiking trails that transform into cross country skiing trails in the winter, and a variety of wildlife viewing areas offers something for all members of the family. Take a self-guided bird watching hike, bring your fishing poles to catch trout, bass, or bluegill in the Bay Beach lagoon or take in a nature class, animal talk, or group activity to learn more about the outdoors.

Park admission is free. **1660 East Shore Dr. baybeachwildlife.com**

Green Bay Botanical Garden

The Garden gives everyone the opportunity to be inspired and refreshed by nature all year long. Visitors can enjoy a show-stopping adventure with 47 acres to explore, including 65,000 plants to see from Wisconsin and around the world.

Enjoy popular events and exhibits throughout the year from more than 300,000 spring blooms, thrilling summer exhibits and the nature-inspired holiday light show, WPS Garden of Lights. **2600 Larsen Rd. gbbg.org**

National Railroad Museum

The National Railroad Museum includes several buildings that feature historic trains, vintage railroading objects and engaging exhibits. Located on 33 acres along the Fox River, the Museum is open year-round and also offers daily train rides from May through September (and weekends in October), special events and educational programming. The museum maintains a noteworthy collection of railroad objects, photographs, manuscripts and rolling stock. You'll find many trains on display, both inside the large exhibit hall and outside on actual working railroad tracks. The National Railroad Museum is home to the "Big Boy", the world's largest steam locomotive weighing in at 1.1 million pounds and measuring over half a football field long. There are many other trains on display to come check out. You can even walk inside most of them and ride the rails in some others. **2285 S Broadway. nationalrrmuseum.org**



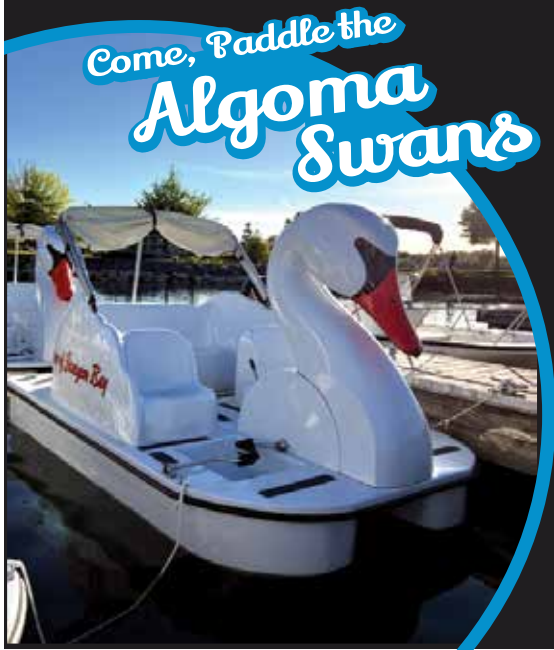
Bay Beach Amusement Park



Green Bay Botanical Gardens

the RIVER

BY BAYSHORE



Come, Paddle the
Algoma Swans



SUP RENTAL | KAYAK RENTAL | BIKE RENTAL
TOURS | GAMES | COMMUNITY

Located on the beautiful Ahnapee River in Downtown Algoma by the 2nd Street Bridge. Grab a kayak or SUP and explore Algoma from the best vantage point! Or, stop in and hang out, there's always something to do by The River.

87 Second Street, Algoma, WI 54201
Mon – Sat 10 am – 5 pm, Sun 10 am – 4 pm

(920) 487-8215 | BayShoreOutfitters.com





A Wild Time in the Algoma-Area Outdoors

Bike, fish, hike or paddle, there's something for everyone

By Kevin Naze

Algoma's salmon and trout fishing can be spectacular, but there's so much more to the area than waiting for a lunker to bite.

The Ahnapee River and Ahnapee State Trail offer an opportunity to take a hike, bike, kayak or canoe on the wild side while not venturing far from the cozy Lake Michigan port community.

Carl Morrison, an avid cyclist who was

nearing 3,300 straight days on his bike at the time of this writing, said the trail is well-maintained, lined with trees that block most of the wind, and offers looks at a lot of neat wildlife.

A four-season rider, Morrison said there's plenty to be thankful for every month if you have the right equipment. Though he enjoys fat-tire biking through fresh

powder in winter, his favorites are spring when everything is coming back to life, summer with all the wild babies, and fall with its amazing colors.

Morrison always has his camera with him, and has captured dozens of types of birds, insects, mammals and reptiles, including some rare bird species.

Another photo buff — avid kayak and bike



by Julie Albrecht



Ahnapee State Trail - by Carl Morrison



by Carl Morrison

Docking Options

ALGOMA MARINA | 60 Steele St.

MAY-OCT (920) 487-2232

NOV-APR (920) 487-5203

The city-owned marina is open May 1-Oct 1 with seasonal and transient slips for vessels up to 40 feet with electricity and water hookups. Additional features include a double launch ramp, parking, fish cleaning station, sanitary pump out, fuel for sale, private showers, public restrooms, and free WiFi.

ALGOMA BOAT CLUB | 180 Sixth St

(920) 487-3861

FOLLOW ALGOMA FISHING



/algomafishing

enthusiast Julie Albrecht — said she likes being on the river as a platform for bird and wildlife watching and photography.

“Sightings from the water level are very special, very intimate,” Albrecht said. “And the species diversity is quite good in the Algoma area. In fact, my first and only sighting of a yellow-billed cuckoo was along the Ahnapee River just outside the city. I have seen sandhill cranes and ducks and geese raising their young, muskrats

and river otters diving, and mama deer teaching their fawns how to cross a river.”

Albrecht appreciates the free put-ins on the river and lake, a couple of which are nicely designed for people with mobility issues. She doesn’t fish, but said it’s fun to watch other people fish from their boats, or from shore.

“You can even paddle between free concerts along both banks of the Ahnapee River near the harbor in summer, and the

music sounds great from a kayak,” Albrecht said. “It’s relaxing after a hard work day, or on weekends.”

Meanwhile, Algoma’s Crescent Beach is a spring through summer draw for beach glass and rock hounds, and the half-mile, lit-at-night boardwalk is a great place to take a relaxing stroll. See what’s happening today at the chamber’s Crescent Beach webcam at <https://bit.ly/algomawiwebcam>



Enjoy Algoma's new live-streaming webcam!

Visit <https://bit.ly/algomawebcam> or scan the QR code so you can watch the waters of Lake Michigan or the calm of the beach as you plan your stay.





Lake Michigan's Best Sport Fishing



Multiple boats for larger groups

Captain Lee Haasch
1-920-255-0604
www.FishAlgoma.com



Explore Algoma

Area Attractions

- 1 Algoma Community Band | 514 Fremont St
- 2 Algoma Performing Arts Center | 514 Fremont St
- 3 Belgian Heritage Center | 1255 County DK, Brussels
- 4 Kewaunee County Fair | 615 3rd St, Luxemburg
- 5 Red Barn Corn Maze | 7125 County Rd J, Forestville
- 6 The Grain Loft | N6975 Hwy 42
- 7 ZSKC – Bruemmer Park Zoo | E4280 Co Rd F, Kewaunee

Fishing & Outdoor Recreation

- 1 Alaskan Golf Club | N6092 Hwy 42, Kewaunee
- 2 Algoma Boat Club | 180 6th St
- 3 Algoma Marina | 60 Steele St
- 4 Fishin' Magician Charters | 50 Shanty Rd
- 5 Friends of the Ahnapee State Trail | E4280 Cty Rd F, Kewaunee
- 6 Gail Force Sportfishing | 60 Steele St
- 7 Haasch Guide Service | 90 Shanty Rd
- 8 Hakuna Matata Charters | 60 Steele St
- 9 Kinn's Sport Fishing | 60 Steele St
- 10 Northbrook Golf & Grill | 407 Northbrook Rd, Luxemburg
- 11 RV Charters | 248 2nd St
- 12 The River by Bayshore | 87 2nd St

Accommodations

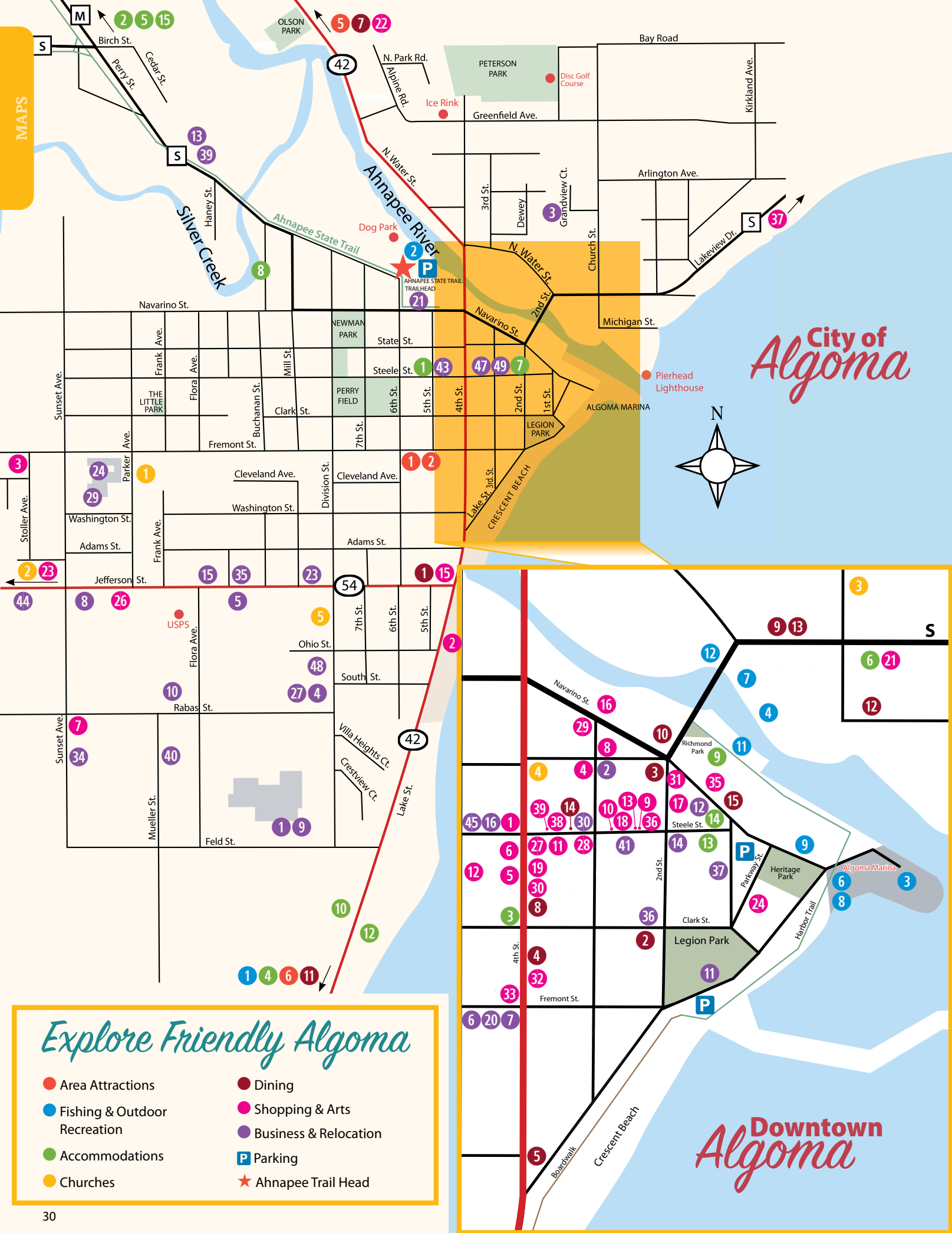
- 1 5th Steele Place | 505 Steele St
- 2 Ahnapee Shores Camping Resort LLC | E6053 W. Wilson Rd
- 3 Anchor's Away Bar & Motel | 533 4th St
- 4 At The Waters Edge BnB | N7136 Hwy 42
- 5 Cherry Tree House | N9059 Cherry Tree Dr
- 6 Harbor Inn Motel | 99 Michigan St
- 7 Hotel Stebbins | 201 Steele St
- 8 Relax N Rentals | 273 Buchanan St
- 9 River's Edge Condos | 123 Navarino St
- 10 Scenic Shore Inn | 2221 Lake St
- 11 Serenity Shore | N6748 State Hwy 42
- 12 Summit Beach Condominium Association | Summit Beach Dr
- 13 The Haven | 112 Steele St
- 14 The Steele Magnolia | 109 Steele St
- 15 Timber Trail Campground | N8326 Cty M

Dining

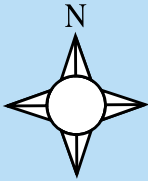
- 1 A&W of Algoma | 1025 Lake St
- 2 Ahnapee Brewery | 202 Clark St
- 3 Algoma Pizza Bowl | 401 2nd St
- 4 Blue Yorkie Juicery | 604 4th St
- 5 Dairy Dean's Family Restaurant | 824 4th St
- 6 Homestead Kitchen & Tap | N7551 Co Rd D
- 7 Melt Bistro at Renard's Cheese | 2189 Cty Rd DK, Sturgeon Bay
- 8 Millie's Pub and Grub | 518 4th St
- 9 North Water Bakery & Deli | 133 N. Water St
- 10 Off the Hook Bar & Grill | 205 Navarino St
- 11 Red's Pub & Grill | N6318 State Hwy 42
- 12 Smashed on the Rocks Saloon | 70 Church St
- 13 The Captain's Galley Room | 133 N Water St
- 14 Three Eleven Bar & Bistro | 311 Steele St
- 15 von Stiehl Cider & Spirits Bar | 105 Navarino St

Shopping & Art

- 1 2nd Hand Rose | 423 4th St
- 2 Algoma Area Chamber of Commerce/Visitor Center | 1226 Lake St
- 3 Algoma Atelier of Sculpture and Art | E5977 Fremont Rd
Home of Bren Sibilisky Sculpture
- 4 Book Corner Algoma Library Friends | 401 3rd St
- 5 Algoma True Value Hardware | 521 4th St
- 6 Amber's Attic & Art | 507 4th St
- 7 BALL Auto and Truck Parts | 1508 Sunset Ave
- 8 Bay Shore Outfitters | 219 State St
- 9 BellaLuna's Apothecary & Boutique | 211 Steele St
- 10 Clay on Steele | 221 Steele St
- 11 Davy's_inks | 316 Steele St
- 12 Denny's SuperValu | 510 5th St
- 13 Fishline Studios Art Collective | 213 Steele St
- 14 Glen Innish Farm | E5427 2nd Rd, Kewaunee
- 15 Graf's MOBIL Mart | 1025 Lake St
- 16 Havegård Birdseed Outlet Store | 225 Navarino St
- 17 Hello Dolly Boutique | 410 2nd St
- 18 Ladybug Glass - Studio & Gallery | 219 Steele St
- 19 Lilac Nails Spa | 504 4th St
- 20 McMahon's Furniture of Luxemburg | 706 Main St, Luxemburg



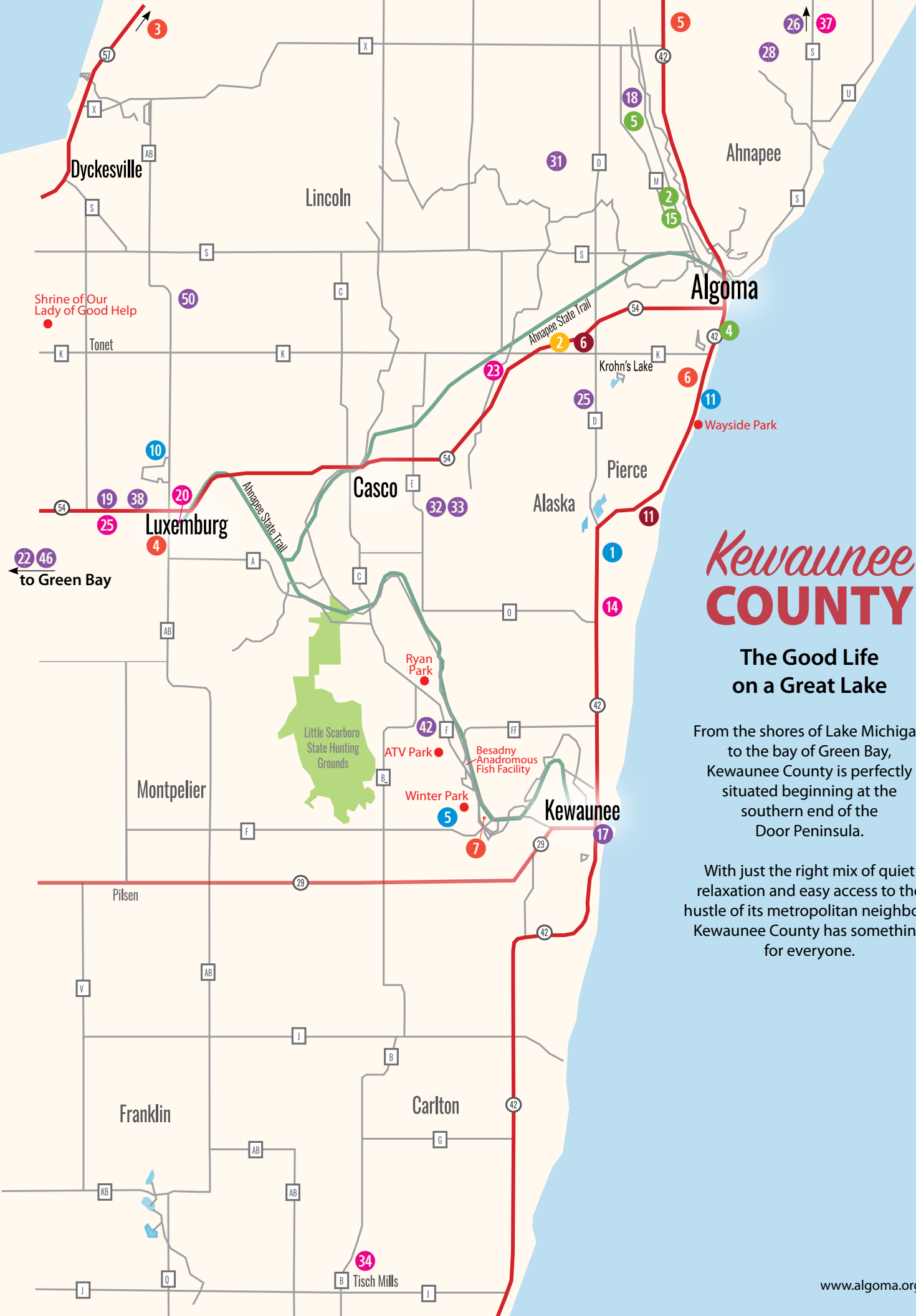
City of Algoma



Explore Friendly Algoma

- Area Attractions
- Fishing & Outdoor Recreation
- Accommodations
- Churches
- Dining
- Shopping & Arts
- Business & Relocation
- P Parking
- ★ Ahnapee Trail Head

Downtown Algoma



Kewaunee **COUNTY**

**The Good Life
on a Great Lake**

From the shores of Lake Michigan to the bay of Green Bay, Kewaunee County is perfectly situated beginning at the southern end of the Door Peninsula.

With just the right mix of quiet relaxation and easy access to the hustle of its metropolitan neighbors, Kewaunee County has something for everyone.



von Stiehl Cider & Spirits Bar



Ahnapee State Trail

Shopping & Art *continued*

- 21 Old Salty's Gift Shop | 99 Michigan St
- 22 Renard's Cheese | 2189 Cty Rd DK, Sturgeon Bay
- 23 Rio Creek Country Store | E4351 Cty Rd K
- 24 Robert Ray Gallery | 520 Parkway St
- 25 Salmon's Meat Products | 107 4th St, Luxemburg
- 26 Sieler Tire | 1404 Jefferson St
- 27 Shipwreck Tattoo | 326 Steele St
- 28 Steele Street Trading Co. and Gallery | 300 Steele St
- 29 St Vincent DePaul Society of Algoma Inc | 303 3rd St
- 30 The Country Cupboard | 510 4th St
- 31 The Honeycomb | 400 2nd St
- 32 The Pottery Co-op | 610 4th St
- 33 Tina Marie's Boutique | 625 4th St
- 34 Tisch Mills Farm Center | N104 Mill Ln, Tisch Mills
- 35 von Stiehl Winery | 115 Navarino St
- 36 WaterFront Creations | 207 Steele St
- 37 Wienke's Market | 292 County Rd S
- 38 Yardstick Books | 317 Steele St
- 39 Yonder | 321 Steele St

Churches

- 1 Algoma United Methodist Church | 804 Parker Ave
- 2 St John's Lutheran Church | E5221 Church Rd
- 3 St Mary's Parish | 214 Church St
- 4 St Paul's Lutheran Church | 406 4th St
- 5 St Paul's Lutheran School | 1115 Division St

Business & Industry

- 1 Algoma Area Education Foundation | 1715 Division St
- 2 Algoma Fire & Rescue | 400 3rd St
- 3 Algoma Housing Authority | 145 Grand View Ct
- 4 Algoma Mop Manufacturers | 813 Rabas St
- 5 Algoma Motors Inc | 1020 Jefferson St
- 6 Algoma Police Department | 416 Fremont St
- 7 Algoma Public Library | 406 Fremont St
- 8 Algoma Public Works | 1520 Fremont St
- 9 Algoma School District | 1715 Division St
- 10 Algoma Utilities | 1407 Flora Ave
- 11 Algoma Youth Club | 620 Lake St

- 12 Allyn's Coin Laundry | 111 Steele St
- 13 Badger Shredding | 1101 Perry St
- 14 Bank of Luxemburg | 510 2nd St
- 15 Baumann Plumbing, Inc | 1103 Jefferson St
- 16 Blazkovec, Blazkovec, & Downey | 409 Steele St
- 17 Blue Water Services | 417 Harrison St, Kewaunee
- 18 Carnival Deer Processing | N9153 Cherry Tree Dr
- 19 Cellcom | 125 Commerce Dr, Luxemburg
- 20 City of Algoma Offices | 416 Fremont St
- 21 CTI Hospitality Inc | 507 Navarino St
- 22 Discover Green Bay | 1945 Argonne St, Green Bay
- 23 Door County Medical Center Algoma Clinic | 815 Jefferson St
- 24 Door County Medical Center Rehab Services | 1510 Fremont St
- 25 Ebert Enterprises | N6939 Co Rd D
- 26 ERA Starr Realty | 14 S. 3rd Ave, Sturgeon Bay
- 27 ESI - Empowering and Supporting Individuals | 813 Rabas St
- 28 Four Sail Realty | E7169 Jackson Rd
- 29 Friends of Algoma Long Term Care | 1510 Fremont St
- 30 FTS Technology Group | 305 Steele St
- 31 Grosbeier Auto & Towing | N9043 Ash Dr
- 32 Heim's Brothers Custom Works | E3730 Rockledge Rd
- 33 Heim's Hillcrest Dairy | E3730 Rockledge Rd
- 34 Kewaunee County Food Pantry | 1528 Sunset Ave
- 35 Lakeshore Vision Centers | 1021 Jefferson St
- 36 Nicolet National Bank | 205 Clark St
- 37 Northeastern Mutual Insurance Company | 515 1st St
- 38 NWTLC Luxemburg | 133 Commerce Dr, Luxemburg
- 39 Olson Fabrication | 1101 Perry St
- 40 Precision Machine Inc | 1604 Mueller St
- 41 Quantum Technologies | 222 Steele St
- 42 Riverview Transfer Station | E3726 Cty Rd L, Kewaunee
- 43 Roots Yoga & Healing | 417 Steele St
- 44 Schinderle Funeral Home & Cremation Services | 1600 Schinderle Ln
- 45 Schinkten Insurance Agency | 413 Steele St
- 46 Todd Wiese Homeselling Team | 2978 Voyager Dr, Green Bay
- 47 UnSalted HD Print Shop | 305 Steele St
- 48 Violence Intervention Project | 1405 Division St
- 49 Weber Insurance Services | 225 Steele St
- 50 Wilson's Wish | N7916 County Rd AB, Luxemburg



We are ready to give you the best fishing experience with an affordable package, great services, and accommodations.

FISH. PARTY. SLEEP. REPEAT

Book your Lake Michigan Charter trip with Hakuna Matata today!

📞 715-451-1697

🌐 HakunaMatataFishing.com

📱 @hakunamatatafishing



Hakuna Matata Charters
Boat location: 60 Steele St. Algoma, WI



Come, Paddle the
Algoma Swans



OUTDOOR GEAR

KAYAK SALES & RENTAL | BIKE RENTAL



EVERYTHING YOU NEED
FOR YOUR NEXT ADVENTURE

Algoma | Sister Bay | Sturgeon Bay

BayShoreOutfitters.com



Book your stay!

No matter how you plan to enjoy Northeast Wisconsin, Algoma is the ideal place to call home base. Located on the shores of Lake Michigan at the southern end of the Door Peninsula, you can enjoy all that Algoma offers while being just a short drive from Door County to the north, Scenic HWY 42 to the south, and Green Bay to the west.

Whether you want a water view or a secluded nook, lodging options include B&Bs, hotels, motels, condos, and AirBnBs. If getting back to nature is more your style, our campgrounds offer amenities for every camping style. We know you love your pets, so Algoma has many pet-friendly options as well.



Scan Me

Book your stay today:

visitalgomawi.com/lodging/



Hotel Stebbins



WE
CAN'T
WAIT
TO
HOST
YOU!

CHERRY TREE HOUSE

5 BEDROOMS / 3 BATHS / 12 GUESTS
NEWLY CONSTRUCTED IN 2020

To book your home away from home, please visit
www.cherrytreehousellc.com
for more information on this short-term rental



STEELE PLACE



OVERNIGHT OR EXTENDED STAY
EXECUTIVE CONDOS

505 STEELE STREET
PO BOX 121 ALGOMA, WI 54201

920-495-STAY
STAY@5THSTEELEPLACE.COM

WWW.5THSTEELEPLACE.COM



E6053 West Wilson Rd
Algoma, WI 54201

Your vacation, staycation, destination!
Awarded Best of Algoma 2023 Campground!



(920)487-5777 Ahnapee.com

Daily, weekly, monthly,
and seasonal rates available.

*Where your camping
experience is above
the standards*

**Clean and
updated restrooms**

Heated pool

Laundry room

Dogs welcome

**Many trails to
enjoy the outdoors**



*Home of Marley, our
10 foot tall tiki fireplace!*



Open Year Round

Affordable 12 room motel with free wifi, flat screen TVs, private bath, a/c, microwave, refrigerator, coffee maker and pet friendly.

Attached is a full bar and tackle shop
Located in central Algoma, 2 blocks from Lake Michigan
and within walking distance of shops, food and events.

ACCOMMODATIONS



533 4th Street Algoma, WI 54201

920.487.8195

Website: www.stayalgoma.com

Email: stayalgoma@gmail.com



Pet Friendly Amenities

- Ahnapee Shores Camping Resort
- Anchor's Away Motel
- At The Waters Edge B&B
- Cherry Tree House
- Hotel Stebbins
- Scenic Shore Inn
- The Haven
- Timber Trail Campground
- Thursday Concerts in the Park*
- Crescent Beach* (October-April)
- Crescent Beach Boardwalk*
- Algoma Riverwalk*
- DeMeuse Dog Park
- Ahnapee State Trail
- Waterfowl and Pheasant Hunting, C.D. Besadny Fish and Wildlife Area Kewaunee County
- Outdoor Seating: North Water Bakery & Deli, Ahnapee Brewery, von Stiehl Winery

Always pick up after your dog!
*Dogs must be leashed.



HOTEL STEBBINS

Enjoy a Personal "Inn Experience" ~ Est. 1857
Beautifully Updated Themed Hotel Rooms
Bar ♦ Lounge ♦ Dining ♦ Game Room ♦ Wifi
EV Charging Stations

201 Steele St. Algoma WI 54201
920-487-5521
hotelstebbins.com



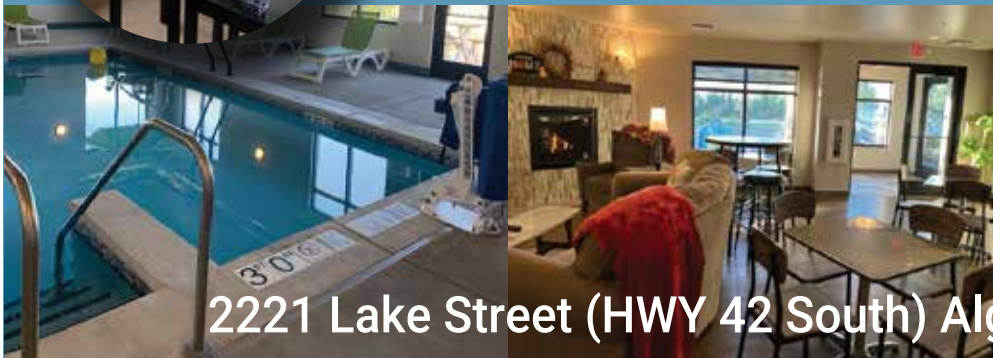
- Indoor Pool and Sauna
- Conference Room
- Fitness Room
- Continental Breakfast
- WI-FI
- Boat Parking & Freezers
- Family Suites



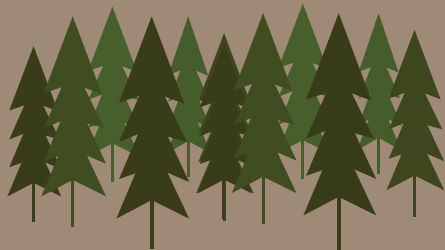
Scenic Shore Inn

920-487-3214

www.scenicshoreinn.com
scenicshoreinn@charter.net



2221 Lake Street (HWY 42 South) Algoma, WI 54201



TIMBER TRAIL CAMPGROUND

ALGOMA, WI

Now offering online reservation booking for tent camping, group tent camping, RV camping and cabin rentals!

Enjoy hiking and biking on the Ahnapee Trail, along with kayaking (rentals available) and fishing on the Ahnapee River!

Join us for themed weekends, competitions, a heated pool all summer long and special rates for weekly and monthly stays!

N8326 County Road M Algoma, WI 54201

www.timbertrailcampgrounds.com

timbertrailcamping@gmail.com



water & electric hookup sites and LP tank filling



THE STEELE MAGNOLIA



VACATION RENTALS

Newly Renovated

- *Luxury Furnished Apartments*
- *6 Total Units*
- *2 Bedrooms*
- *1 Bathroom*
- *1 Pull Out Couch*
- *Complimentary Von Stiehl bottle of wine*
- *Coffee Bar*



920-615-7565

109 Steele Street Algoma, WI
thesteelemagnolia109@gmail.com

Book with us direct @
<https://pms.thesteelemagnolia.com>



Local Cuisine

Algoma's locally owned and operated eateries are ready to tantalize your taste buds with everything from fruit smoothies to flatbreads, BBQ to seafood, and the Wisconsin favorite Friday night fish fry to the farm-to-table experience.

Enjoy area specialties made with locally produced cheese, cherries, apples, wine, and craft beer. Divine desserts are in the mix including, of course, cheesecake and ice cream.

You will find your favorite hearty breakfasts, burgers for every appetite, pizza, pasta, soups, salads, sandwiches, Taco Tuesdays, Thursday Tapas, and Saturday night prime rib.

From family-friendly to fine dining, your seat is waiting for you at the table.

Scan Me
for all of Algoma's dining options or visit algoma.org/dining





OFF the HOOK BAR & GRILL

VISIT FACEBOOK FOR DETAILS ON WEEKLY SPECIALS & BUSINESS HOURS.



(920) 487-8075
205 NAVARINO STREET
ALGOMA, WI 54201




HOME OF THE CAPTAIN JAX BURGER!





N7551 County Road D
Algoma, WI 54201

A unique family-friendly, farm-to-table experience!

(920) 487-0105

Hours

Thursday-Saturday 3:30 -9:00pm Sunday 9:30am - 1:30pm
(Serving food until 9:00pm) (Brunch only)

info@homesteadkitchenandtap.com
www.homesteadkitchenandtap.com



518 4th St.
Downtown Algoma, WI 54201

920-487-8192

See our daily specials on



Dine in
or
Take out



Home of the
Hall of Fame Burger!

Excellent burgers
Homemade soups
Friday Fish Fry
Salads, wraps & more!

Enjoy our
family-friendly
dining area.



GREAT
HOMESTYLE
COOKING
& *Ice Cream
Creations*

Open 7 days a week!
Dine in or carry out
Call 920-487-5996 to order or visit
us at: 824 Fourth St., Algoma, WI

www.dairydeansfamilyrestaurant.com

Dairy Dean's Family Restaurant





**STEAKS
PRIME RIB
BURGERS
SALMON**

LAKEVIEW DINING



CRAFT BEER



NIGHTLY SPECIALS



LOCATED BETWEEN ALGOMA AND KEWAUNEE ON HWY 42

REDSPUBANDGRILL.COM 920-677-8499



**202 CLARK STREET
ALGOMA, WI**

**ENJOY AWARD
WINNING BREWS,
WITH A LAKE
MICHIGAN VIEW!**

**OPEN YEAR ROUND,
SEVEN DAYS A WEEK.**

AHNAPEEBREWERY.COM



Shop Algoma

From a walkable historic downtown district to homegrown regional treasures just a short drive away, shopping is redefined in Algoma. Dotted with a great mix of retail shopping, antique stores, art galleries, especially food shops, and eateries, there is something for everyone.

The robust history of Algoma is very evident today and can be seen just by taking a stroll through town. Take the Historic Algoma Walking tour at your own pace and learn about the gorgeous Victorian-style homes to hotels then and now and everything in between.



Lidral and Andre Hardware in 1903



2nd Hand Rose 2023

Corner of Steele and 2nd Streets



Mathias Melchior Building c. 1900



Steele Street Trading Co. & Gallery 2023

300-304 Steele Street



Ahnapee Brewery 1876



vonStiehl Winery 2023

115 Navarino Street

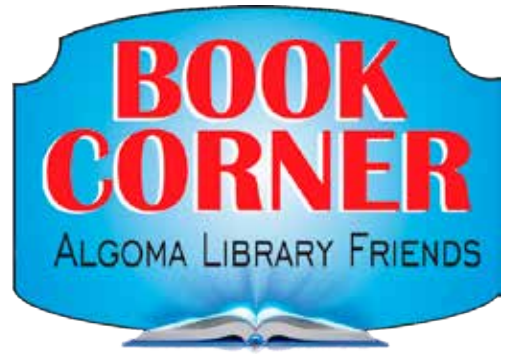


Hotel Stebbins c. 1906



Hotel Stebbins 2023

201 Steele Street



Gently used books, DVDs, audio books, puzzles, and games at BARGAIN prices!

Open Fridays & Saturdays
11 AM – 3 PM

**401 Third St.
Algoma, WI 54201**



algomabookcorner.com

Salmon's

MEAT PRODUCTS

107 Fourth St.
Luxemburg, WI 54217
(920) 845 -2721
info@salmonsmeatproducts.com
www.salmonsmeatproducts.com 

Three generations of smoked sausage traditions!



Retail Store Hours:
Monday - Friday 9am- 5pm
Saturday 8am - 12pm

Featuring fresh, local, natural casing wieners, steaks, ground beef, burgers, brats, ham, double smoked bacon, beef sticks, beef jerky, ring bologna, mettwurst, liver sausage, summer sausage, polish sausage, seasoned raw beef, sidepork and more! Venison processing September 1 - March 31.

Lilac

NAILS SPA

Professional Nail Care for Ladies & Gentleman

Business Hours

Monday - Saturday: 9:00am - 6:00pm
Sunday: Closed

Visit our Facebook page "Lilac Nails Spa" to see more unique nail designs!

**CALL (920) 487-8222
TO MAKE AN APPOINTMENT**

 504 Fourth St., Algoma, WI 54201

**WALK-INS
WELCOME**



THE COUNTRY CUPBOARD

- GIFTS
- HOMEWARES
- GOURMET
- CARDS
- BATH & BODY
- FARMHOUSE
- TEXTILES
- COTTAGE

“IT’S IN THE CUPBOARD”

510 FOURTH STREET
ALGOMA, WI 54201
920-304-2180

mcc1867@gmail.com 

WIENKE'S MARKET



A unique Door County Farmstead
6 miles north of Algoma on County S

FARM MARKET

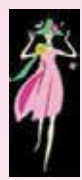
- *Fresh Produce*
- *Baked Goods*
- *Wisconsin Cheese & Wine*
- *Home Canning*
- *Homemade Fudge*

OPEN DAILY YEAR-ROUND

292 County Road S
Algoma, WI 54201

920-743-7014

www.wienkes.com



Tina Marie's BOUTIQUE

CASUAL TO FORMAL WEAR • ACCESSORIES



Bridal, Bridesmaids, Prom, Pageant & Quinceanera Gowns, Mother's Dresses, Children's Wear, Menswear, Tux Rental, Alterations. Sizes XS thru Plus

*Accessories Galore
Hats, Scarves, Shawls, Jewelry,
Purses, Shoes & More!*

Lingerie, Corsets & Undergarments

920-487-3711

Hours by Appointment

625 4th St.
Algoma, WI 54201

www.tinamarieboutique.com

tinamarie123@sbcglobal.net



Clay on Steele - A family enjoys painting ornaments during Small Business Saturday.

Renards
ARTISAN CHEESE



2189 COUNTY RD. DK, STURGEON BAY, WI • 920.825.7272 • RENARDSCHEESE.COM

Our family-owned Cheese Store & Melt Bistro invites you to enjoy the best hand-crafted Wisconsin cheese and comfort food made from scratch with fresh, local ingredients. Don't forget our catering and charcuterie board menus as well as a variety of local Door County products!

Also available are items in our **Grab & Go** cooler featuring; Prepared Meals, Charcuterie Boards, Salads, Snacks, Soups, Desserts, and more!





Independent &
Locally owned.
Est. 2018

[local and regional history, field & travel guides, and maps]

- Books
- Puzzles
- Cards
- Gifts



YARDSTICK BOOKS

(920) 487 8174
317 Steele St, Algoma, WI
www.yardstickalgoma.com



Kewaunee County's First Lavender Farm



GLEN INNISH FARM

Locally Raised Beef and Lamb

Local Lavender Fields

Hand Crafted Small Batch Lavender Products

E5247 2nd Rd - Kewaunee

Check out our Website for current hours, events
and to book the cabin gleninnish.com



Check out the
Cabin at the Glen
(short term rental)

Thriving Industry

Algoma's rich manufacturing history includes everything from hardwoods to hammocks and washing machines to wine. There is more than meets the eye when it comes to what is produced and offered right here in the Algoma area.

Algoma is currently home to two, full-service fabrication and machining facilities, a 10,000-square-foot wine production facility, a new, 50,000-square-foot cheese manufacturing facility, a national millwork and casework company, a label production company, three handcrafted soap and lotion makers, and the state's largest mop manufacturer.

Agriculture also plays a huge part in the Algoma area with not only dairy, but with beef, lamb, lavender, birdfeed, lumber, and Door County cherries.

And that is not all! The Algoma School District has student-run enterprises that incorporate printing and manufacturing.

Scan Me

Visit <https://bit.ly/algomaindustry>



Precision Machine

ALGOMA BY THE NUMBERS

POPULATION (According to City Data.com)

- 3,219** Algoma (2021)
- 20,619** Kewaunee County
- 46.4** Median Age
- 51%** Male
- 49%** Female
- 2.5%** Unemployment Rate (Kewaunee Co. 3/23)
- \$67,363** Median Family Income (2021)
- \$127,207** Median Property Value

GEOGRAPHY

- 343** sq. mi. land | **742** sq. mi. water
- 2.51** sq. mi. City Area | **1084** sq. mi. County

WEATHER Average Highs (°F)

- 49°** Spring | **78°** Summer | **56°** Autumn | **26°** Winter

**People you know.
Service you trust.**



Shared strength through
 WPPI Energy

1407 Flora Avenue
 Algoma, WI 54201-1796
 920-487-5556
algomautilities.com



Olson Fabrication

THE ULTIMATE VERSATILE SHREDDING SOLUTION

ONE MACHINE. MANY MISSIONS.



CALL TODAY (920) 487-8035 | BADGERSHREDDING.COM

CUSTOM METAL FABRICATION & MACHINING



CALL TODAY FOR A FREE ESTIMATE 920.487.7250 | OLSONFABRICATION.COM



Algoma Clinic

Caring for YOU

~ Serving Algoma since 2001 ~

The Door County Medical Center Algoma Clinic is proud to serve Kewaunee county with world-class care.



Door County Medical Center

IN PARTNERSHIP WITH HOSPITAL SISTERS HEALTH SYSTEM

Trusted team. Close to home.

815 Jefferson Street
920.487.3496
dcmedical.org

Family Medicine

OB/GYN

Lab and X-ray Facilities

Behavioral Care

Orthopedics

Diabetic Specialties

Same-day medical appointments available

Scan to download My DCMC or visit dcmedical.org/app



Download My DCMC



App Features:

- View health information
- Schedule appointments
- Pay a bill
- See wait times
- And much more!



Algoma Rehab Services

Providing comprehensive award-winning rehab services at our spacious Algoma Rehab facility including:

- Physical Therapy
- Occupational Therapy
- Speech Therapy
- Massage Therapy



ALGOMA REHAB

1510 Fremont Street • 920.487.9888
dcmedical.org



Door County Medical Center

IN PARTNERSHIP WITH HOSPITAL SISTERS HEALTH SYSTEM



(920) 487-2662

*Continuing the Tradition.
Honoring Lives & Caring for Families.*

Todd & Renee (Robillard) Huehns
Laurie Schinderle, Erik Huehns
Brock & Amanda Huehns
Nicole Steinhoff, Judy Pluff



1600 Schinderle Lane
Algoma, WI 54201

schinderlefuneralhome@gmail.com
www.schinderlefuneralhome.com



- Auto
- Farm
- Home
- Business
- Life
- Health

SR-22 FILINGS

ALL LINES OF INSURANCE

ALGOMA OFFICE
225 Steele St
487-3435
743-8900

STURGEON BAY OFFICE
14 S. 3rd Ave
743-3300



14 S. Third Avenue
Sturgeon Bay, WI 54235
920-743-4321
800-661-8555

2594 Bay Shore Drive
Sister Bay, WI 54324
920-854-2394
800-720-6888

Email: info@erastarr.com

View all our listings at
www.erastarr.com



Door & Kewaunee County's top-selling, locally-owned agency for 28 consecutive years!

JOIN US FOR WORSHIP

ST. JOHN'S LUTHERAN CHURCH
Missouri Synod

**E5221 Church Rd.
Algoma, WI 54201**

3 miles west of Algoma,
Hwy 54 at Church Rd. (Rankin)

stjohnsalgoma.org
920-487-2335

Worship services:
Saturday 4:00 pm
Sunday 8:30 am

Rev. Dr. Christopher Jackson, Pastor
920-365-2218

John 3:16 For God so loved the world that he gave his only begotten Son, that whoever believes in him should not perish but have everlasting life.



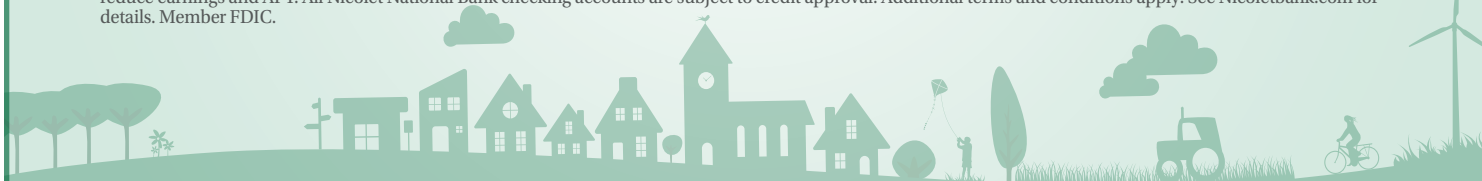
The home of **3.00%** Annual Percentage Yield **Real Rewards Checking**



Nicolet
NATIONAL BANK

205 Clark St, Algoma | 920.487.3421 | NicoletBank.com

Real Rewards Checking (Real Rewards) is available for consumer deposits only. Annual Percentage Yield ("APY") is accurate as of 1/1/2023. Real Rewards is a variable rate account. Your APY may change at any time after your account is opened, at the discretion of Nicolet National Bank. Real Rewards is a tiered rate product. If qualifications are met for the qualification cycle, Tier 1: The portion of your balance that is equal to or less than \$15,000 will earn 3.00% APY. Tier 2: The portion of your balance that is over \$15,000 will earn 0.01% APY. The APY for Tier 2 will range from 0.40% to 3.00%, depending on the balance in your account. If qualifications are not met for the qualification cycle, your entire balance will earn 0.01% APY. You must enroll in online banking and e-statements in order to qualify. Transactions required each qualification cycle: At least ten posted and cleared debit card transactions (ATM-processed transactions do not count as qualifying debit card transactions), and at least one posted and cleared direct deposit of payroll or social security. Disclosed APY assumes all interest remains on deposit. Fees and withdrawals of interest will reduce earnings and APY. All Nicolet National Bank checking accounts are subject to credit approval. Additional terms and conditions apply. See Nicoletbank.com for details. Member FDIC.



Serving Door & Kewaunee County

(920) 743-8888
FOURSAIL.NET



**Residential, Commercial,
Vacant & Hunting Land**

Lee Haasch, Broker





Chamber Membership

AGRICULTURE

Ebert Enterprises

N6939 Co Rd D | (920) 487-9932
 ebertent.com

FTS Technology Group

305 Steele St | (920) 880-0088
 ftstechgroup.com/

Glen Innish Farm

E5427 2nd Rd Kewaunee | (920) 251-7450
 gleninnish.com | [See page 46](#)

Havegård Birdseed LLC

225 Navarino St | (920) 487-5620
 havegardbirdseed.com | [See page 60](#)

Heim Brothers Custom

E3731 Rockledge Rd
 (920) 536-0118 | heimshillcrest.com

Heim's Hillcrest Dairy

E3731 Rockledge Rd
 (920) 536-0118 | heimshillcrest.com

Kewaunee County Fair

625 3rd St Luxemburg
 kewauneecountyfair.com

Tisch Mills Farm Center

N104 Mill Ln Tisch Mills
 (920) 776-1299

ART GALLERY/STUDIOS

Algoma Atelier of Sculpture & Art

Home of Bren Sibilsky Sculpture
 E5977 Fremont Rd | (920) 487-4200
 brensculpture.com

Amber's Attic & Art

507 4th St | (920) 246-0076
 facebook.com/ambersatticalgoma

ArtBeet, Kewaunee County

PO Box 63 | (920) 255-1278
 artbeetkc.square.site

BellaLuna's Apothecary & Boutique

211 Steele St | (920) 471-5091
 facebook.com/BellaLunasApothecary

Clay on Steele

221 Steele St | (920) 487-3501
 clayonsteele.com

Fishline Studios Art Collective

213 Steele St | (920) 473-0415
 fishlinestudios.com | [See page 22](#)

Ladybug Glass Studio & Gallery

219 Steele St | (920) 591-2883
 ladybugstudiogallery.com | [See page 20](#)

Robert Ray Gallery

520 Parkway St | (920) 495-6677
 robertraygallery.com | [See page 21](#)

Steele Street Trading Co & Gallery

300 Steele St | (920) 487-3840
 steelestreetfloral.com

The Pottery Co-op

610 4th St | (847) 772-040
 facebook.com/algomapottery

Yonder

321 Steele St | (906) 295-0993
 yonderartland.com

AUTOMOTIVE

Algoma Motors

1020 Jefferson St | (920) 487-3418
 algomamotors.com

BALL Auto & Truck Parts

1508 Sunset Ave | (920) 487-7278
 napaonline.com

Blue Water Services

417 Harrison St Kewaunee
 (920) 388-4550
 bluewaterservices.org

Graf's Mobil Mart

1025 Lake St | (920) 487-2527
 exxon.com

Grosbeier Auto & Towing

N9043 Ash Dr | (920) 487-2786
 facebook.com/Grosbeier-Auto
 -and-Towing-146378268792123

Seiler Tire

1404 Jefferson St | (920) 487-2951
 seilertire.com

BANKS/FINANCES/ INSURANCE SERVICES

Bank of Luxemburg

510 2nd St | (920) 487-5288
 bankofluxemburg.com

Nicolet Bank

205 Clark St | (920) 487-3421
 nicoletbank.com | [See page 51](#)

Northeastern Mutual Insurance Company

515 1st St | (920) 487-5954

Schinkten Insurance Agency, Inc.

413 Steele St | (920) 487-3553
 statefarm.com

Weber Insurance Services

225 Steele St | (920) 487-3435
 weberins.com | [See page 50](#)

BOATING/CHARTER FISHING /LICENSES/DOCKING

Algoma Boat Club

180 6th St

Algoma Marina

60 Steele St | (920) 487-2232
 487-5203 | algomacity.org

Blue Water Services

417 Harrison St Kewaunee
 (920) 388-4550
 bluewaterservices.org

Fishin' Magician Charters

50 Shanty Rd | (920) 304-3474
 fishinmagiciancharters.com | [See page 60](#)

Gail Force Sport Fishing

60 Steele St | (920) 304-1999
 gailforcesport.com | [See page 59](#)

Graf's Mobil Mart

1025 Lake St | (920) 487-2527
 exxon.com

Haasch Guide Service
90 Shanty Rd | (920) 255-0604
fishalgoma.com | [See page 28](#)

Hakuna Matata Charters
60 Steele St | (715) 451-1697
hakunamatatafishing.com | [See page 33](#)

Kinn's Sport Fishing
60 Steele St | (800) 446-8605
kinnskatch.com

RV Charters
248 2nd St | (800) 487-0022
rvcharters.net

BREWERY

Ahnapee Brewery - Algoma
202 Clark St | (920) 785-0822
ahnapeebrewery.com | [See page 42](#)

BUSINESS/PROFESSIONAL SERVICES

ATTORNEY

Blazkovec, Blazkovec & Downey
409 Steele St | (920) 487-5571
bbddoorcountylawyer.com

CELLULAR

Cellcom
125 Commerce Dr Luxemburg
(920) 845-1683 | cellcom.com

IT/COMPUTER

FTS Technology Group
305 Steele St | (920) 880-0088
ftstechgroup.com

Quantum Technologies
222 Steele St | (920) 256-1214
quantumpc.com

PROMOTIONAL APPAREL

UnSalted HD Print Shop
305 Steele St Suite 202
(920) 304-2272 | facebook.com/
UnSalteddontbesalty

CAMPGROUNDS/ CAMPING GEAR

Ahnapee Shores Camping Resort LLC
E6053 W. Wilson Rd | (920) 487-5777
ahnapee.com | [See page 36](#)

Bay Shore Outfitters
219 State St | (920) 487-8215
bayshoreoutfitters.com | [See page 34](#)

Timber Trail Campground
N8326 Cty M | (920) 487-3707
timbertrailcampgrounds.com
[See page 39](#)

CHURCHES

Algoma United Methodist Church
804 Parker Ave | (920) 487-2727
ourdoorsareopentoall.org

St. John's Lutheran Church
E5221 Church Rd | (920) 487-2335
stjohnsalgoma.org | [See page 50](#)

St. Mary Parish
214 Church St | (920) 487-5005 Ext 1
stmarysalgoma.com

St. Paul's Evangelical Lutheran Church
406 4th St | (920) 487-5712
stpaulsalgoma.org

COMMUNITY RESOURCES

Algoma Fire & Rescue
400 3rd St | (920) 487-2712
algomacity.org

Algoma Housing Authority
145 Grand View Ct | (920) 487-5905
algomahousing.com

Algoma Marina
60 Steele St | (920) 487-2232
487-5203 | algomacity.org

**Algoma Parks & Rec Dept
/Youth Club**
620 Lake St | (920) 487-5480
algomacity.org

Algoma Police Department
416 Fremont St | (920) 487-3311
algomacity.org

Algoma Public Library
406 Fremont St | (920) 487-2295
algomapubliclibrary.org

Algoma Public Works
1520 Fremont St | (920) 487-2391
algomacity.org

Algoma School District
1715 Division St | (920) 487-7001
algomawolves.org

Algoma Utilities
1407 Flora Ave | (920) 487-5556
algomautilities.com | [See page 47](#)

**Algoma Visitors Center
/Chamber of Commerce**
1226 Lake St | (920) 487-2041
algoma.org

City of Algoma Offices
416 Fremont St | (920) 487-5203
algomacity.org

**ESI - Empowering and Supporting
Individuals**
813 Rabas St | (920) 487-3541
esiempowers.com

**Kewaunee County Economic
Development Corp.**
PO Box 361 Luxemburg
(920) 255-1661
kewauneecountyedc.org

Kewaunee County Food Pantry
1528 Sunset Ave | (920) 487-3663
kcfpantry.org

NWTC Luxemburg
133 Commerce Dr Luxemburg
(920) 845-5945
nwtc.edu/Luxemburg

Violence Intervention Project
1405 Division St | (920) 487-211
(877) 847-3223 | vipadvocates.net

COMMUNITY SERVICE ORGANIZATIONS

Algoma Area Education Foundation
1715 Division St

Algoma Library Friends/Book Corner
401 3rd St | (920) 304-9214
algomabookcorner.com | [See page 43](#)

Algoma Lions Club
facebook.com/AlgomaLionsClub

ArtBeet, Kewaunee County
PO Box 63 | (920) 255-1278
artbeetkc.square.site

Belgian Heritage Center
1255 County DK Brussels | (920) 825-7319
belgianheritagecenter.org | [See page 19](#)

Community Improvement of Algoma
PO Box 3 | algomaciofa.org

Discover Green Bay
1945 Argonne St Green Bay | (920) 494-9507
greenbay.com | [See page 2](#)

Dyckesville Lions Club
E505 Cty Rd S Luxemburg

**ESI - Empowering and Supporting
Individuals**
813 Rabas St | (920) 487-3541
esiempowers.com

Friends of Algoma Long Term Care Unit
1510 Fremont St

Friends of Crescent Beach
PO Box 344
Friendsofcrescentbeach.org

Friends of The Ahnapee State Trail
E4280 Cty Rd F Kewaunee
ahnapeestatetrail.com

Kewaunee County Food Pantry
1528 Sunset Ave | (920) 487-3663
kcfpantry.org

Kewaunee Lions Club
kewauneelionsclub.org

St. Vincent DePaul Society of Algoma, Inc
303 3rd St | (920) 487-2402
facebook.com/SVDPA

Violence Intervention Project
1405 Division St | (920) 487-2111
(877) 847-3223 | vipadvocates.net

Wilson's Wish
N7916 County Rd AB Luxemburg
(920) 229-3770 | wilsons-wish.com

ZSKC – Bruemmer Park Zoo
E4280 Co Rd F Kewaunee
(920) 388-0444 | bruemmerparkzoo.com

ENTERTAINMENT

Algoma Community Band
514 Fremont St
algomacommunityband.com

Algoma Performing Arts Center
514 Fremont St | algomapac.com

Kewaunee County Fair
625 3rd St Luxemburg
kewauneecountyfair.com

EV CHARGING STATION

Hotel Stebbins - For guests
201 Steele St | (920) 487-5521
hotelstebbins.com | [See page 38](#)

EVENT VENUE

Algoma Boat Club
180 6th St

Algoma Performing Arts Center
514 Fremont St | algomapac.com

Algoma Pizza Bowl
401 2nd St | (920) 487-2721
algomapizzabowl.com

Algoma United Methodist Church
804 Parker Ave | (920) 487-2727
ourdoorsareopentoall.org

Algoma Youth Club
620 Lake St | (920) 487-5480
algomacity.org

ESI - Empowering and Supporting Individuals
813 Rabas St | (920) 487-3541
esiempowers.com

Homestead Kitchen & Tap
N7551 Co Rd D | (920) 487-0105
homesteadkitchenandtap.com
[See page 40](#)

Kewaunee County Fair
625 3rd St Luxemburg
kewauneecountyfair.com

Robert Ray Gallery
520 Parkway St | (920) 495-6677
robertraygallery.com

Scenic Shore Inn
2221 Lake St | (920) 487-3214
scenicshoreinn.com | [See page 38](#)



The Grain Loft
N6975 WI-42 | (920) 487-8300
grainloftwisconsin.com | [See page 15](#)

St. John's Lutheran Church
E5221 Church Rd | (920) 487-2335
stjohnsalgoma.org | [See page 50](#)

St. Mary Parish
214 Church St | (920) 487-5005 Ext 1
stmarysalgoma.com

St. Paul's Evangelical Lutheran Church
406 4th St | (920) 487-5712
stpaulsalgoma.org

**FLORAL/GARDEN/
GREENHOUSE**

Steele Street Trading Co & Gallery
300 Steele St | (920) 487-3840
steelestreetfloral.com

Wienke's Market
292 County Rd S | (920) 743-7014
wienkes.com | [See page 45](#)

FUNERAL NEEDS

Algoma United Methodist Church
804 Parker Ave | (920) 487-2727
ourdoorsareopentoall.org

Belgian Heritage Center
1255 County DK Brussels | (920) 825-7319
belgianheritagecenter.org | [See page 19](#)

Schinderle Funeral Home & Cremation Services
1600 Schinderle Ln | (920) 487-2662
schinderlefuneralhome.com
[See page 50](#)

Steele Street Trading Co & Gallery
300 Steele St | (920) 487-3840
steelestreetfloral.com

St. John's Lutheran Church
E5221 Church Rd | (920) 487- 2335
stjohnsalgoma.org | [See page 50](#)

St. Mary Parish
214 Church St | (920) 487-5005 Ext 1
stmarysalgoma.com

St. Paul's Evangelical Lutheran Church
406 4th St | (920) 487-5712
stpaulsalgoma.org

FURNITURE/ HOME DÉCOR

2nd Hand Rose
423 4th St | (920) 255-2990

Amber's Attic & Art
507 4th St | (920) 246-0076
facebook.com/ambersatticalgoma

Clay on Steele
221 Steele St | (920) 487-3501
clayonsteele.com

Ladybug Glass Studio & Gallery
219 Steele St | (920) 591-2883
ladybugstudiogallery.com | [See page 20](#)

McMahon's Furniture of Luxemburg
706 Main St Luxemburg | (920) 845-2341
mcmahonsofluxemburg.com

Steele Street Trading Co & Gallery
300 Steele St | (920) 487-3840
steelestreetfloral.com

St. Vincent DePaul
303 3rd St | (920) 487-2402
facebook.com/SVDPA

The Country Cupboard
510 4th St | (920) 304-2180
facebook.com/algomacountrycupboard
[See page 45](#)

The Honeycomb
400 2nd St | (920) 255-0672
qbhandmadesoaps.net

GARBAGE/RECYCLING

Blue Water Services

417 Harrison St Kewaunee
(920) 388-4550
bluwaterservices.org

Riverview Transfer Station

E3726 Cty Rd L Kewaunee | (920) 388-2223
kewauneetransferstation.com

GAS

Graf's Mobil Mart

1025 Lake St | (920) 487-2527
exxon.com

GOLF

Alaskan Golf Club

N6092 Hwy 42 Kewaunee | (920) 388-3940
facebook.com/Alaskan-Golf-Club
-283556170202

Northbrook Golf & Grill

407 Northbrook Rd Luxemburg
(920) 845-2306 | northbrookgolf.com

GROCERY

Denny's SuperValu

510 5th St | (920) 487-2525
dennysupervalu.com

Graf's Mobil Mart

1025 Lake St | (920) 487-2527
exxon.com

Renard's Cheese

2189 Cty Rd DK Sturgeon Bay
(920) 825-7272 | renardscheese.com
See page 45

Salmon's Meat Products

107 4th St Luxemburg | (920) 845-2721
salmonsmeatproducts.com | *See page 44*

Wienke's Market

292 County Rd S | (920) 743-7014
wienkes.com | *See page 45*

HARDWARE

Algoma True Value Hardware

521 4th St | (920) 487-5088
doorcountycoop.com

Rio Creek Country Store

E4351 Cty Rd K | (920) 837-7777
doorcountycoop.com

HOME CONSTRUCTION /IMPROVEMENT

Baumann Plumbing

1103 Jefferson St | (920) 487-2067
baumannplumbinginc.com

Blue Water Services

417 Harrison St Kewaunee | (920) 388-4550
bluwaterservices.org

Riverview Transfer Station

E3726 Cty Rd L Kewaunee(920) 388-2223
kewauneetransferstation.com

INDUSTRY/MANUFACTURING

Algoma Mop Manufacturers

813 Rabas St | (800) 216-3478
algomamop.com

Algoma Wolf Tech

1715 Division St | (920) 487-7001
algomawolves.org

Badger Shredding Inc.

1101 Perry St | (920) 487-8035
badgershredding.com | *See page 48*

CTI Hospitality Inc.

507 Navarino St | (920) 487-5209
ctihospitality.com

Havegård Birdseed LLC

225 Navarino St | (920) 487-5620
havegardbirdseed.com | *See page 60*

Olson Fabrication, Inc

1101 Perry St | (920) 487-7250
olsonfabrication.com | *See page 48*

Precision Machine, Inc.

1604 Mueller St | (920) 487-5950
builtbyprecision.com

The AbiliTees Project

1715 Division St | (920) 487-7001
algomawolves.org

LAUNDROMAT

Allyn's Coin Laundry

111 Steele St | (920) 360-5050

LODGING/CONDOMINIUMS /VACATION RENTALS

5th Steele Place

505 Steele St | (920) 495-7829
5thSteelePlace.com | *See page 36*

Anchor's Away Bar & Motel

533 4th St | (920) 487-8195
See page 37

At the Water's Edge BnB

N7136 State Hwy 42 | (920) 203-9584
atthewatersedgebnb.com

Cherry Tree House

N9059 Cherry Tree Dr | (920) 980-0682
cherrytreehousellc.com | *See page 35*

Harbor Inn Motel

99 Michigan St | (920) 487-5241
harborinnalgoma.com

Hotel Stebbins

201 Steele St | (920) 487-5521
hotelstebbins.com | *See page 38*

Relax N Rentals

273 Buchanan St | (414) 940-5786
relaxnrentals.net

River's Edge Condos

123 Navarino St | (920) 487-5802
riversedgecondos.net

Scenic Shore Inn

2221 Lake St | (920) 487-3214
scenicshoreinn.com | *See page 38*

Serenity Shore

N6748 State Hwy 42 | (847) 265-0137
evolve.com/491171

Summit Beach Condominium Association

Summit Beach Dr | (920) 432-7176

The Haven

112 Steele St | (920) 333-1845
thehavenalgoma.com

The Steele Magnolia

109 Steele St | (920) 615-7565
pms.thestelemagnolia.com | *See page 39*

MEDICAL/HEALTH /WELLNESS/BEAUTY

Blue Yorkie Juicery

604 4th St | (920) 487-8400
blueyorkiejuicery.com

Davy's_inks

316 Steele St | (920) 365-1227
facebook.com/profile.
php?id=100086937633958

Door County Medical Center Algoma Clinic

815 Jefferson St | (920) 487-3496
dcmedical.org | *See page 49*

Door County Medical Center Rehab Services

1510 Fremont St | (920) 487-9888
dcmedical.org | *See page 49*

Lakeshore Vision Center

1021 Jefferson St | (920) 487-2020
lakeshorevisioncenter.com

Lilac Nails Spa

504 4th St | (920) 487-8222
facebook.com/profilepp?id=100083045303685
See page 44

Roots Yoga & Healing

417 Steele St | (920) 255-0776
rootsyogamindbody.com

Shipwreck Tattoo

326 Steele St | (920) 487-8158
facebook.com/algomatattoo

REAL ESTATE/RENTALS/HOUSING

ERA Starr Realty

14 S. 3rd Ave Sturgeon Bay | (800) 661-8555
erastarr.com | *See page 50*

Four Sail Realty

E7169 Jackson Rd | (920) 743-8888
foursail.net | *See page 51*

REAL ESTATE/RENTALS/HOUSING
continued

Summit Beach Condominium Association
Summit Beach Dr | (920) 432-7176

The Steele Magnolia
109 Steele St | (920) 615-7565
pms.thestelemagnolia.com | *See page 39*

Todd Wiese Homeselling System, Inc.
2978 Voyager Dr Green Bay
(920) 406-0001 | toddwieseteam.com
See page 58

RECREATION/OUTDOORS
(see also Charter Fishing)

Alaskan Golf Club
N6092 Hwy 42 Kewaunee | (920) 388-3940
facebook.com/Alaskan-Golf-Club-283556170202

Algoma Pizza Bowl
401 2nd St | (920) 487-2721
algomapizzabowl.com

Bay Shore Outfitters
219 State St | (920) 487-8215
bayshoreoutfitters.com | *See page 34*

Carnival Deer Processing
N9153 Cherry Tree Dr | (920) 493-8733
carnivaldeer.com

Northbrook Golf & Grill
407 Northbrook Rd Luxemburg
(920) 845-2306 | northbrookgolf.com

Red Barn Corn Maze
7125 County Rd J Forestville | (920) 495-6293
redbarnmaze.com | *See page 17*

The River by Bay Shore
87 2nd St | (920) 487-8215
bayshoreoutfitters.com | *See page 25*

ZSKC – Bruemmer Park Zoo
E4280 Co Rd F Kewaunee | (920) 388-0444
bruemmerparkzoo.com

RESTAURANTS/DINING/PUBS

A&W of Algoma
1025 Lake St | (920) 487-8236
awrestaurants.com/menu

Ahnapee Brewery - Algoma
202 Clark St | (920) 785-0822
ahnapeebrewery.com-08 | *See page 42*

Algoma Pizza Bowl
401 2nd St | (920) 487-2721
algomapizzabowl.com

Anchor's Away Bar & Motel
533 4th St | (920) 487-8195
See page 37

Blue Yorkie Juicery
604 4th St | (920) 487-8400
blueyorkiejuicery.com

Dairy Dean's Family Restaurant
824 4th St | (920) 487-5668
dairydeansfamilyrestaurant.com
See page 41

Homestead Kitchen & Tap
N7551 Co Rd D | (920) 487-0105
homesteadkitchenandtap.com
See page 40

Hotel Stebbins
201 Steele St | (920) 487-5521
hotelstebbins.com | *See page 38*

Millie's Pub and Grub
518 4th St | (920) 487-8192
facebook.com/Millies-Pub-and-Grub-101967885602076 | *See page 41*

Northbrook Golf & Grill
407 Northbrook Rd Luxemburg
(920) 845-2306 | northbrookgolf.com

Off the Hook Bar & Grill
205 Navarino St | (920) 487-8075
See page 40

Red's Pub & Grill
N6318 State Hwy 42 | (920) 677-8499
redspubandgrill.com | *See page 42*

Renard's Cheese Melt Bistro
2189 Cty Rd DK Sturgeon Bay
(920) 825-7272 | renardscheese.com
See page 45

Smashed on the Rocks Saloon
70 Church St | (920) 487-8202
facebook.com/teamsmashed

Steel Belly Barbecue
(920) 606-6232 | steelbellybbq.com

The Captain's Galley Room
133 N. Water St | (920) 487-5306
northwaterbakeryanddeli.com

Three Eleven Bar & Bistro
311 Steele St | (920) 487-8065
threeelevenbarbistro.com

von Stiehl Cider & Spirits Bar
105 Navarino St | (920) 487-5208
vonstiehl.com | *See page 3*

SCHOOLS

Algoma School District
1715 Division St | (920) 487-7001
algomawolves.org

NWTC Luxemburg
133 Commerce Dr. Luxemburg
(920) 845-5945 | nwtc.edu/luxemburg

St. Paul's Lutheran School
1115 Division St | (920) 487-5712
stpaulsalgoma.org

SERVICES/MISC

Davy's_inks
316 Steele St | (920) 365-1227
facebook.com/profile.php?id=100086937633958

Shipwreck Tattoo
326 Steele St | (920) 487-8158
facebook.com/algomatattoo

SHOPPING

ANTIQUES
2nd Hand Rose
423 4th St | (920) 255-2990

Amber's Attic & Art
507 4th St | (920) 246-0076
facebook.com/ambersatticalgoma

Robert Ray Gallery
520 Parkway St | (920) 495-6677
robertraygallery.com | *See page 21*

APPAREL
2nd Hand Rose
423 4th St | (920) 255-2990

Bay Shore Outfitters
219 State St | (920) 487-8215
bayshoreoutfitters.com | *See page 34*

BellaLuna's Apothecary & Boutique
211 Steele St | (920) 471-5091
facebook.com/BellaLunasApothecary

Hello Dolly Boutique
410 2nd St | (920) 255-8917
facebook.com>HelloDollyAlgoma

St. Vincent DePaul
303 3rd St | (920) 487-2402
facebook.com/SVDPA

Tina Marie's Boutique
625 4th St | (920) 487-3711
tinamariesboutique.com | *See page 45*

UNSalted HD Print Shop
305 Steele St Suite 202
(920) 304-2272 | facebook.com/UnSalteddontbesalty

BEAUTY/HEALTH SUPPLIES
BellaLuna's Apothecary & Boutique
211 Steele St | (920) 471-5091
facebook.com/BellaLunasApothecary

The Honeycomb
400 2nd St | (920) 255-0672
qbandmadesoaps.net

WaterFront Creations
207 Steele St | (920) 304-3170
waterfrontcreations.com

BOOKS

Algoma Library Friends/Book Corner
401 3rd St | (920) 304-9214
algomabookcorner.com | [See page 43](#)

Yardstick Books
317 Steele St | (920) 487-8174
yardstickalgoma.com | [See page 46](#)

GIFTS

2nd Hand Rose
423 4th St | (920) 255-2990

Algoma Library Friends/Book Corner
401 3rd St | (920) 304-9214
algomabookcorner.com | [See page 43](#)

Amber's Attic & Art
507 4th St | (920) 246-0076
facebook.com/ambersatticalgoma

BellaLuna's Apothecary & Boutique
211 Steele St | (920) 471-5091
facebook.com/BellaLunasApothecary

Clay on Steele
221 Steele St | (920) 487-3501
clayonsteele.com

Fishline Studios Art Collective
213 Steele St | (920) 473-0415
fishlinestudios.com | [See page 22](#)

Ladybug Glass Studio & Gallery
219 Steele St | (920) 591-2883
ladybugstudiogallery.com | [See page 20](#)

Old Salty's Gift Shop
99 Michigan St | (920) 487-5241
harborinnalgoma.com

Robert Ray Gallery
520 Parkway St | (920) 495-6677
robertraygallery.com | [See page 21](#)

Steele Street Trading Co & Gallery
300 Steele St | (920) 487-3840
steelestreetfloral.com

The Country Cupboard
510 4th St | (920) 304-2180
facebook.com/algomacountrycupboard
[See page 45](#)

The Honeycomb
400 2nd St | (920) 255-0672
qbhandmadesoaps.net

The Pottery Co-op
610 4th St | (847) 772-0401
facebook.com/algomapottery

WaterFront Creations
207 Steele St | (920) 304-3170
waterfrontcreations.com

Yardstick Books
317 Steele St | (920) 487-8174
yardstickalgoma.com. | [See page 46](#)

Yonder
321 Steele St | (906) 295-0993
yonderartland.com

SPECIALTY SHOPPING - FOOD
Glen Innish Farm
E5427 2nd Rd Kewaunee | (920) 251-7450
gleninnish.com | [See page 46](#)

North Water Bakery/Deli
133 N. Water St | (920) 487-5306
northwaterbakeryanddeli.com

Renard's Cheese
2189 Cty. Rd. DK Sturgeon Bay
(920) 825-7272 | renardscheese.com
[See page 45](#)

Salmon's Meat Products
107 4th St Luxemburg | (920) 845-2721
salmonsmeatproducts.com | [See page 44](#)

Wienke's Market
292 County Rd S | (920) 743-7014
wienkes.com | [See page 45](#)

WINE/BEER

Ahnapee Brewery - Algoma
202 Clark St | (920) 785-0822
ahnapeebrewery.com | [See page 42](#)

von Stiehl Cider & Spirits Bar
105 Navarino St | (920) 487-5208
vonstiehl.com | [See page 3](#)

von Stiehl Winery
115 Navarino St | (920) 487-5208
vonstiehl.com | [See page 3](#)

TATTOOS

Davy's_inks
316 Steele St | (920) 365-1227
facebook.com/profile.
php?id=100086937633958

Shipwreck Tattoo
326 Steele St | (920) 487-8158
facebook.com/algomatattoo

TRAVEL/TOURISM

Algoma Visitors Center/Chamber of Commerce
1226 Lake St | (920) 487-2041
algoma.org

Discover Green Bay
1945 Argonne St Green Bay | (920) 494-9507
greenbay.com | [See page 2](#)

Jamie Allen Dream Vacations
(920) 559-3525 | saltwatergal.com

WEDDINGS/SPECIAL OCCASIONS

Algoma Boat Club
180 6th St

Algoma United Methodist Church
804 Parker Ave | (920) 487-2727
ourdoorsareopentoall.org

Algoma Youth Club
620 Lake St | (920) 487-5480
algomacity.org

Lilac Nails Spa
504 4th St | (920) 487-8222
facebook.com/profilepp?id=100083045303685
[See page 44](#)

North Water Bakery/Deli
133 N. Water St | (920) 487-5306
northwaterbakeryanddeli.com

Northbrook Golf & Grill
407 Northbrook Rd Luxemburg
(920) 845-2306 | northbrookgolf.com

Robert Ray Gallery
520 Parkway St | (920) 495-6677
robertraygallery.com | [See page 11](#)

Steel Belly Barbecue
(920) 606-6232 | steelbellybbq.com

Steele Street Trading Co & Gallery
300 Steele St | (920) 487-3840
steelestreetfloral.com

St. John's Lutheran Church
E5221 Church Rd | (920) 487- 2335
stjohnsalgoma.org | [See page 50](#)

St. Mary Parish
214 Church St | (920) 487-5005 Ext 1
stmarysalgoma.com

The Grain Loft
N6975 WI-42 | (920) 487-8300
grainloftwisconsin.com | [See page 15](#)

Tina Marie's Boutique
625 4th St | (920) 487-3711
tinamariesboutique.com | [See page 45](#)

WINERY

von Stiehl Cider & Spirits Bar
105 Navarino St | (920) 487-5208
vonstiehl.com | [See page 3](#)

von Stiehl Winery
115 Navarino St | (920) 487-5208
vonstiehl.com | [See page 3](#)

Check out our listing online with interactive mapping

For up-to-date member details, head to VisitAlgomaWI.com



Your Home **SOLD** *Guaranteed* or We'll Buy It!*

Visit: www.ToddWieseSoldGuarantee.com
or Call 920.406.0001

7 BIG REASONS TO CALL THE TODD WIESE HOMESELLING TEAM TO SELL YOUR HOME!

1) WE HAVE OVER 6,028 BUYERS WAITING IN OUR DATABASE...

We have 6,028 Buyers in Waiting in our Database. Many are pre-approved and waiting for the perfect property. Aggressive marketing of our listings has resulted in thousands of buyer inquiries – Your home may already be sold!

2) **YOU WILL LOVE THE HOME YOU BUY THROUGH US OR WE WILL BUY IT BACK OR SELL IT FOR FREE GUARANTEED*** - In Writing! Todd's the only agent that offers this unique consumer program and he does it for one reason. To insure your complete satisfaction.

3) **YOUR HOME WILL SELL FOR TOP DOLLAR!** Our client's homes sold on average for 99 % of the asking price compared to the board average of 95.3%. We Guarantee Your Home will Sell at Your Price and if Not We'll Pay You the Difference!*

4) **YOUR HOME WILL SELL FASTER!** Per the RANW Multiple Listing Service* the average agent took 77 days to sell a house compared to our homes selling in 26 days. THAT'S TWICE AS FAST!

5) **YOU WON'T GET STUCK OWNING TWO HOMES!*** Stop worrying about selling your home, if you buy one of our listings we'll take yours in Trade!

6) **WE ARE A SAFE BET!** But don't take our word for it... check out over 500 of past client reviews on Zillow. Our "Honest Promises Guarantee" gives you the right to evaluate how well we are performing and if you're not completely satisfied you can cancel the agreement... you're in control.

7) We **GUARANTEE** to advertise your home 24 hours a day until its **SOLD!**

*Todd and Seller must agree on price and closing date prior to listing
*Information Gathered in 2020/2021

Come troll the beautiful waters of Lake Michigan with Gail Force Sportfishing, a professional fishing experience



Captain Tyler Yunk



Call 920-304-1999 to book your next fishing trip!

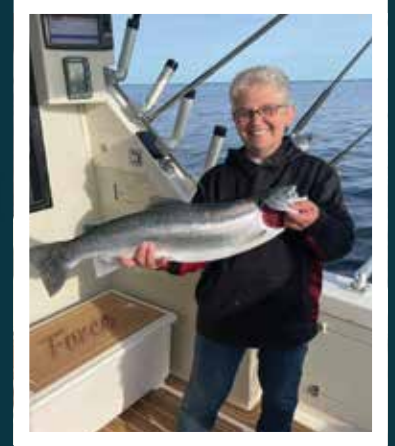
gailforcesport@gmail.com

GAIL FORCE



ALGOMA, WI

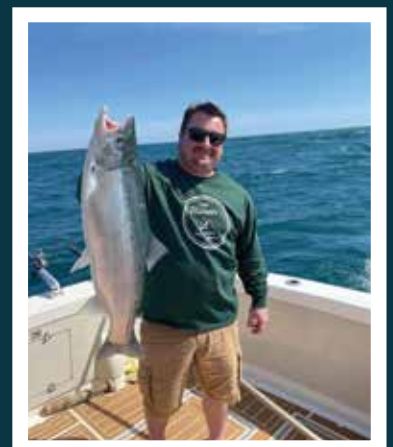
www.gailforcesport.com



Captain Riley Mancl



35' Bertram and the "Mad Russian" 35' Viking





Havegärd Birdseed Outlet Store
225 Navarino St.
Algoma, WI



havegardbirdseed.com
(920) 487-5620

Birdseed Birdhouses. Birdfeeders
Nest Builders Bird Decor & Much More!

Hours M -F 10 am - 6 pm Weekends 9 am - 5 PM



Fishin' Magicians Charters
50 Shanty Rd
Algoma, WI



fishinmagiciancharters.com
(920) 304-FISH (3474)

Full-service Charter Company
Custom Smoking & Vacuum Sealing
Condo Lodging Available

